



Australian Government
Department of Immigration
and Border Protection



Australian
BORDER FORCE

Immigration Detention and Community Statistics Summary

28 February 2017

Table of Contents

Immigration Detention and Community Statistics Summary.....	1
About this report.....	3
Enquiries	3
Acronyms	3
Immigration Detention And Community Statistics Summary	4
In Community Under Residence Determination Population By State/Territory	5
Immigration Detention Population	6
From 1990 to 28 February 2017	6
People In Immigration Detention Facilities.....	7
Arrival Type.....	7
People In Immigration Detention.....	8
Nationality	8
Children In Immigration Detention.....	9
Time In Immigration Detention Facilities	11
Time In Community Under Residence Determination.....	12

About this report

This report provides an overview of the number of people in immigration detention and Regional Processing Centres as at midnight on the date of the report. The report is produced on a monthly basis.

Data is sourced from several departmental processing and recording systems. Data relating to the immigration detention population is dynamic and there can be delays in transmission of information from the department's immigration detention network operations. Variations in figures between this report and previous issues can occur. Due to these issues, data from the current financial year should always be considered provisional.

Further information about immigration detention is available at:

<http://www.border.gov.au/about/immigration-detention-in-australia>

Enquiries

Comments or enquiries concerning this report should be sent using the department's client service feedback form quoting the name and date of the report.

See: <http://www.border.gov.au/about/contact/make-enquiry/enquiries-and-feedback>

Acronyms

Table 1 – Acronyms used in this document

Acronym	Description
APOD	Alternative Place of Detention
IMA	Illegal Maritime Arrival
IDC/F	Immigration Detention Centre/Facility
IRH	Immigration Residential Housing
ITA	Immigration Transit Accommodation
RPC	Regional Processing Centre
S501	Section 501 of the Migration ACT
S501 Visa Cancellation	Visa cancellations based on character or related grounds

Immigration Detention And Community Statistics Summary

At 28 February 2017, there were 1383 people in immigration detention facilities, including 1119 in immigration detention on the mainland and 264 in immigration detention on Christmas Island.

A further 550 people were living in the community after being approved for a residence determination and 24,760 were living in the community after grant of a Bridging Visa E.

The table below reflects figures based on records in Department of Immigration and Border Protection systems.

Table 2 – People in Immigration Detention Facilities (IDFs), Alternative Places of Detention (APODs), Regional Processing Centres (RPCs) and the Community at 28 February 2017

Place of immigration detention	Men	Women	Children	Total	Change from Previous Summary 31/01/17
Christmas Island IDC	264	0	0	264	- 5
Maribyrnong IDC	91	6	0	97	+ 4
Perth IDC	20	8	0	28	0
Villawood IDC	415	51	0	466	+ 46
Yongah Hill IDC	272	0	0	272	- 54
Mainland APODs	47	0	<5	48	+ 45
Total in IDCs/APODs	1,109	65	<5	1,175	+ 36
Adelaide ITA	10	<5	0	13	- 1
Brisbane ITA	63	18	<5	82	- 5
Melbourne ITA	99	14	0	113	+ 2
Total in IRH and ITA	172	35	<5	208	- 4
Total in IDC/F	1,281	100	<5	1,383	+ 32
Total in Community under Residence Determination	179	151	220	550	- 18
Total IMA in Community on Bridging Visa E (Including people in a re-grant process)	17,700	3,164	3,896	24,760	- 492
Republic of Nauru (RPC)	284	49	45	378	- 2
Manus Province, Papua New Guinea (RPC)	837	0	0	837	- 24
Total IMA in RPCs	1,121	49	45	1,215	- 26
Detention Group					
S501 Visa Cancellation	426	19	0	445	-3
Illegal Maritime Arrival	380	21	<5	402	-15
Other	475	60	<5	536	50
Total	1,281	100	<5	1,383	+ 32

In Community Under Residence Determination Population By State/Territory

Of the 550 people living in the community after being approved for a residence determination, 35.3 per cent were in Victoria, 26.7 per cent in New South Wales, 24.2 per cent in Queensland, 7.8 per cent in Western Australia, 5.8 per cent in South Australia, 0.2 per cent in the Australian Capital Territory.

Table 3 – People in the Community under Residence Determination by State/Territory at 28 February 2017

State/Territory	Adult Male	Adult Female	Child Male (<18 years)	Child Female (<18 years)	Total
Victoria	68	51	42	33	194
New South Wales	40	44	38	25	147
Queensland	41	35	35	22	133
Western Australia	22	12	6	<5	43
South Australia	8	9	6	9	32
Australian Capital Territory	0	0	<5	0	<5
Total	179	151	128	92	550

Immigration Detention Population

From 1990 to 28 February 2017

The number of people in immigration detention including foreign fishers has increased by 14 to 1933 from 1919 in the previous report.

Figure 1 – Population in Immigration Detention

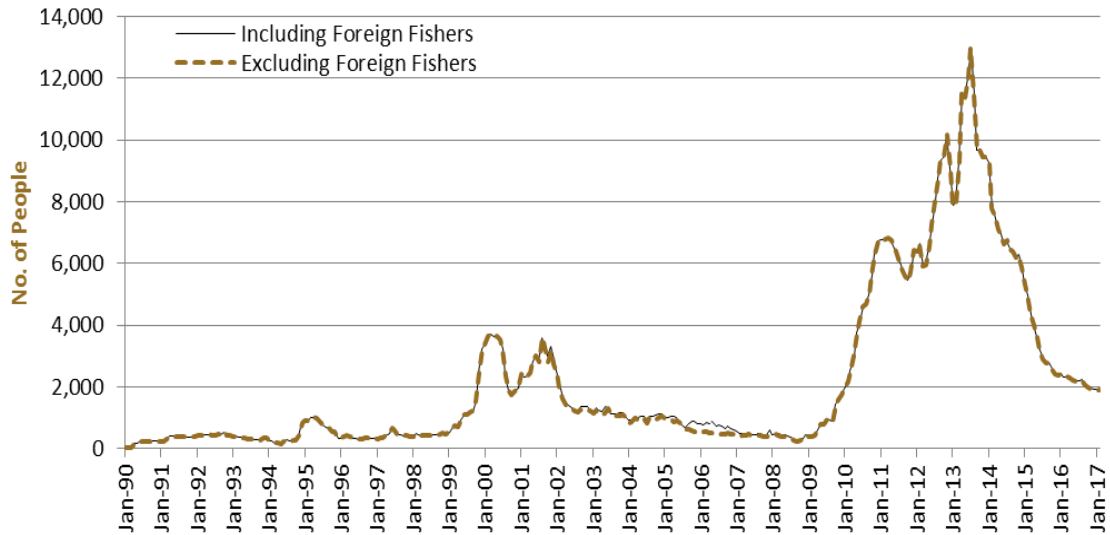


Figure 1 above, shows the number of people in immigration detention from 1990 to the date of this report. The trend had a consistent rise of people in immigration detention from January 2009 to January 2013, but has since had consistent decline.

People In Immigration Detention Facilities

Arrival Type

There were 521 people who arrived unlawfully by air or boat, in held immigration detention facilities at 28 February 2017 representing 37.7 per cent of the total immigration detention population.

There were also 862 people (about 62.3 per cent of the total immigration population) who arrived in Australia lawfully and were subsequently taken into immigration detention and had visa cancellations for either over staying or breaching their visa conditions.

Figure 2 – People in Held Immigration Detention Facilities by Detention Group

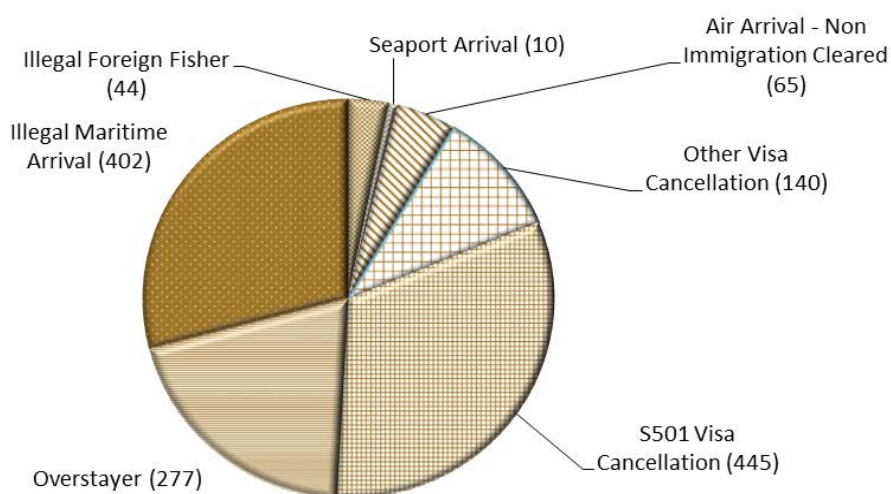


Figure 2 above, shows the number of people in held immigration detention facilities by detention group, including Overstayers, S501 and Other Visa Cancellations, Foreign Fishers, Irregular Maritime Arrivals, Unauthorised Air Arrivals, and if required – Inadequately Documented Crew Members and Others such as stowaways and ship deserters.

Table 4 – People in Held Immigration Detention Facilities by Detention Group at 28 February 2017

Place of immigration detention	S501 Visa Cancellation	IMA	Other Detention Group	Total	Change from Previous Summary 31/01/17
Christmas Island IDC	148	67	49	264	- 5
Maribyrnong IDC	30	22	45	97	+ 4
Perth IDC	13	<5	11	28	0
Villawood IDC	160	99	207	466	+ 46
Yongah Hill IDC	69	111	92	272	- 54
Mainland APODs	<5	<5	46	48	+ 45
Total IDCs/APODs	421	304	450	1,175	+ 36
Adelaide ITA	<5	<5	8	13	- 1
Brisbane ITA	23	34	25	82	- 5
Melbourne ITA	0	60	53	113	+ 2
Total in IRH and ITA	24	98	86	208	- 4
Total in IDC/F	445	402	536	1,383	+ 32

People In Immigration Detention

Nationality

At 28 February 2017, there were 1383 people in held immigration detention facilities. Of these 1383 people, 13.1 per cent were from New Zealand, 10 per cent were from Vietnam, 8.9 per cent were from Iran, 6.1 per cent were from Sri Lanka and 4.9 per cent were from China.

Table 5 – People in Held Immigration Detention Facilities by Nationality at 28 February 2017

Nationalities	Adult Male	Adult Female	Child Male (<18 years)	Child Female (<18 years)	Total
New Zealand	172	9	0	0	181
Vietnam	127	11	0	0	138
Iran	108	14	<5	0	123
Sri Lanka	84	0	0	0	84
China	52	16	0	0	68
India	57	<5	0	0	58
Malaysia	37	12	0	0	49
Pakistan	49	0	0	0	49
United Kingdom	48	0	0	0	48
Other	547	37	<5	0	585
Total	1,281	100	<5	0	1,383

At 28 February 2017, 550 were people living in the community after being approved for a residence determination. Of these 550 people, 47.6 per cent were from Iran, 13.6 per cent were from Sri Lanka, 9.8 per cent were Stateless and 6 per cent were from Iraq.

Table 6 – People in the Community under Residence Determination by Nationality at 28 February 2017

Nationalities	Adult Male	Adult Female	Child Male (<18 years)	Child Female (<18 years)	Total
Iran	91	81	51	39	262
Sri Lanka	19	17	26	13	75
Stateless	15	14	11	14	54
Iraq	11	7	7	8	33
Vietnam	11	8	8	5	32
Other	32	24	25	13	94
Total	179	151	128	92	550

Children In Immigration Detention

At 28 February 2017 there were less than five children (aged less than 18 years) in Immigration Residential Housing, Immigration Transit Accommodation and Alternative Places of Detention.

Figure 3 – Children in Immigration Residential Housing, Immigration Transit Accommodation and Alternative Places of Detention

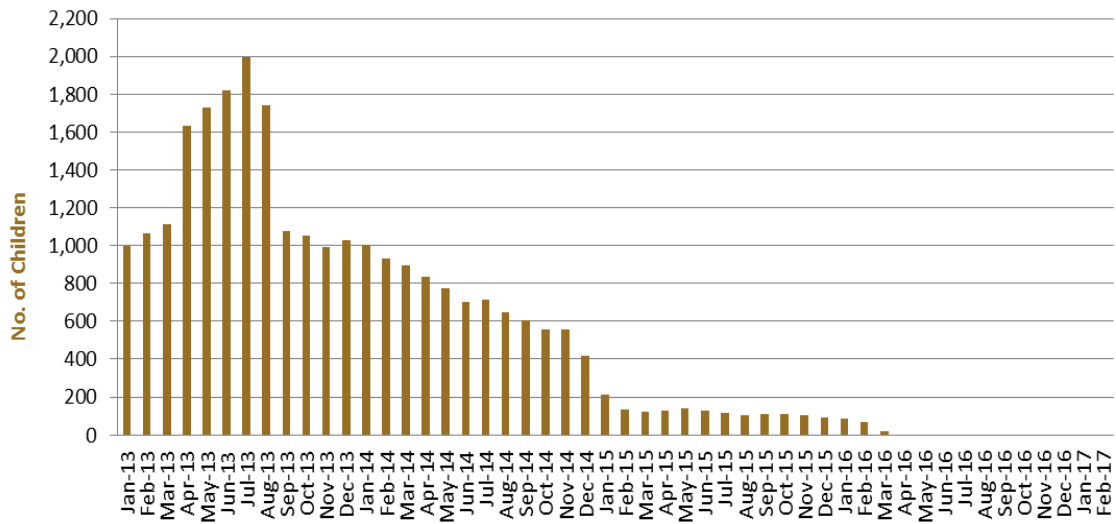


Figure 3 above, shows the number of children in immigration detention facilities and alternative places of detention from January 2013 to the date of this report. The continuous increase in the number of children in detention facilities from April 2013 to August 2013 was due to a rapid increase in irregular maritime arrivals during this period. The number of children in immigration detention facilities reduced in September 2013, as children completed mandatory processing and were transferred into the community. The number of children in detention facilities continued to decline during the late 2013 and 2014, with further reduction in January 2015.

At 28 February 2017, the number of children living in the community after being approved for a residence determination has decreased by 14 to 220 from 234 in the previous report.

Figure 4 – Children in the Community under Residence Determination

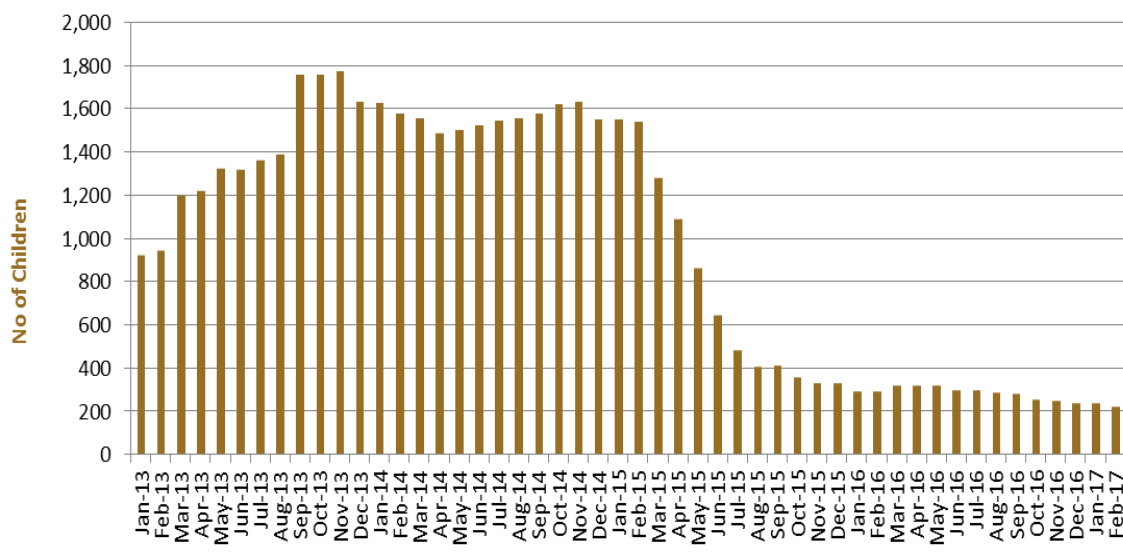


Figure 4 above, shows the number of children in the community under residence determination from January 2012 to the date of this report. The number of children in the community under residence determination has levelled off at its lowest number since the peak in November 2013, as a result of releases into the community on Bridging E visas.

Table 7 – Children in Immigration Detention and IMA Children in the Community on a Bridging E Visa at 28 February 2017

Placement Type	Children
Immigration Residential Housing	0
Immigration Transit Accommodation	<5
Alternative Places of Detention	<5
Total Children in Immigration Detention Facilities	<5
Total Children in the Community under a Residence Determination	220
Total IMA Children in the Community on a Bridging E visa (including in re-grant process)	3,896

Time In Immigration Detention Facilities

At 28 February 2017, there were 1383 people in immigration detention facilities. Of these 1383 people, 33.6 per cent had been detained for 91 days or less and 58.4 per cent had been detained for 365 days or less.

Table 8 – Length of Time of People in Held Immigration Detention Facilities at 28 February 2017

Period Detained	Total	% of Total
7 days or less	121	8.7%
8 days - 31 days	157	11.4%
32 days - 91 days	187	13.5%
92 days - 182 days	132	9.5%
183 days - 365 days	210	15.2%
366 days - 547 days	132	9.5%
548 days - 730 days	123	8.9%
Greater than 730 days	321	23.2%
Total	1,383	100%

At 28 February 2017, the average period of time for people held in detention facilities was 467 days.

Figure 5 – Average Number of Days of People in Held Immigration Detention Facilities only

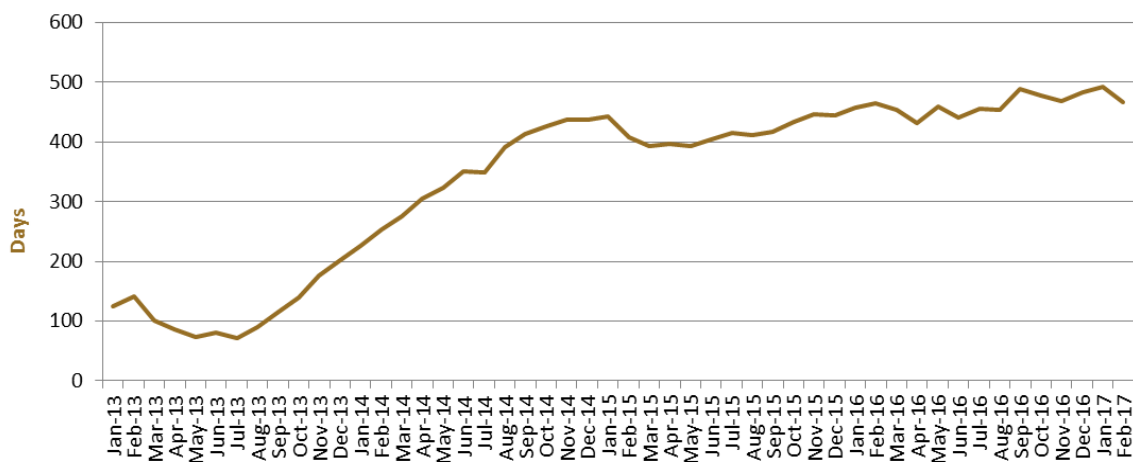


Figure 5 above, shows the average days in held immigration detention only by month from January 2013 to the date of this report. The average period of time for people held in detention facilities steadily increased from July 2013 to January 2015. Between January 2015 and March 2015, the average period of time for people in held detention facilities decreased.

Time In Community Under Residence Determination

Of the 550 people in the community under residence determination, as at 28 February 2017, 7.5 per cent had been in the community for 91 days or less and 42 per cent had been in the community for 365 days or less.

Table 9 – Length of Time of People in Community under Residence Determination at 28 February 2017

Period Detained	Total	% of Total
7 days or less	7	1.3%
8 days - 31 days	13	2.4%
32 days - 91 days	21	3.8%
92 days - 182 days	18	3.3%
183 days - 365 days	172	31.3%
366 days - 547 days	110	20.0%
548 days - 730 days	46	8.4%
Greater than 730 days	163	29.6%
Total	550	100%