



Australian Government
**Department of Immigration
and Border Protection**



**Australian
BORDER FORCE**

Immigration Detention and Community Statistics Summary

30 April 2017

Table of Contents

Immigration Detention and Community Statistics Summary.....	1
About this report.....	3
Enquiries	3
Acronyms	3
Immigration Detention And Community Statistics Summary	4
In Community under Residence Determination Population By State/Territory.....	5
Immigration Detention Population	6
From 1990 to 30 April 2017	6
People In Immigration Detention Facilities.....	7
Arrival Type.....	7
People In Immigration Detention.....	8
Nationality	8
Children In Immigration Detention.....	9
Time In Immigration Detention Facilities	11
Time In Community Under Residence Determination.....	12

About this report

This report provides an overview of the number of people in immigration detention and Regional Processing Centres as at midnight on the date of the report. The report is produced on a monthly basis.

Data is sourced from several departmental processing and recording systems. Data relating to the immigration detention population is dynamic and there can be delays in transmission of information from the department's immigration detention network operations. Variations in figures between this report and previous issues can occur. Due to these issues, data from the current financial year should always be considered provisional.

Further information about immigration detention is available at:

<http://www.border.gov.au/about/immigration-detention-in-australia>

Enquiries

Comments or enquiries concerning this report should be sent using the department's client service feedback form quoting the name and date of the report.

See: <http://www.border.gov.au/about/contact/make-enquiry/enquiries-and-feedback>

Acronyms

Table 1 – Acronyms used in this document

Acronym	Description
APOD	Alternative Place of Detention
IMA	Illegal Maritime Arrival
IDC/F	Immigration Detention Centre/Facility
IRH	Immigration Residential Housing
ITA	Immigration Transit Accommodation
RPC	Regional Processing Centre
S501	Section 501 of the Migration ACT
S501 Visa Cancellation	Visa cancellations based on character or related grounds

Immigration Detention And Community Statistics Summary

At 30 April 2017, there were 1,392 people in immigration detention facilities, including 1,108 in immigration detention on the mainland and 284 in immigration detention on Christmas Island.

A further 556 people were living in the community after being approved for a residence determination and 23,573 were living in the community after grant of a Bridging Visa E.

The table below reflects figures based on records in Department of Immigration and Border Protection systems.

Table 2 – People in Immigration Detention Facilities (IDFs), Alternative Places of Detention (APODs), Regional Processing Centres (RPCs) and the Community at 30 April 2017

Place of immigration detention	Men	Women	Children	Total	Change from Previous Summary 31/03/17
Christmas Island IDC	284	0	0	284	+ 4
Maribyrnong IDC	89	8	0	97	- 2
Perth IDC	22	9	0	31	+ 8
Villawood IDC	452	65	0	517	+ 61
Yongah Hill IDC	249	0	0	249	- 15
Mainland APODs	22	0	<5	23	+ 14
Total IDCs/APODs	1,118	82	<5	1,201	+ 70
Adelaide ITA	14	<5	0	16	- 11
Brisbane ITA	46	16	0	62	- 6
Melbourne ITA	93	20	0	113	+ 11
Total in IRH and ITA	153	38	0	191	- 6
Total in IDC/F	1,271	120	<5	1,392	+ 64
Total in Community under Residence Determination	188	152	216	556	+ 12
Total IMA in Community on Bridging Visa E (Including people in a re-grant process)	16,679	3,076	3,818	23,573	- 490
Republic of Nauru (RPC)	278	50	45	373	0
Manus Province, Papua New Guinea (RPC)	821	0	0	821	- 8
Total IMA in RPCs	1,099	50	45	1,194	- 8
Detention Group					
S501 Visa Cancellation	427	19	0	446	+ 1
Illegal Maritime Arrival	361	16	0	377	-20
Other	483	85	<5	569	+ 83
Total	1,271	120	<5	1,392	+ 64

In Community under Residence Determination Population By State/Territory

Of the 556 people approved for a residence determination to live in the community, 36 per cent were in Victoria, 27 per cent in New South Wales, 23 per cent in Queensland, 7.9 per cent in Western Australia, 5.9 per cent in South Australia and 0.2 per cent in the Australian Capital Territory.

Table 3 – People in the Community under Residence Determination by State/Territory at 30 April 2017

State/Territory	Adult Male	Adult Female	Child Male (<18 years)	Child Female (<18 years)	Total
Victoria	71	53	42	34	200
New South Wales	43	46	36	25	150
Queensland	40	34	34	20	128
Western Australia	25	10	6	<5	44
South Australia	9	9	6	9	33
Australian Capital Territory	0	0	<5	0	<5
Total	188	152	125	91	556

Immigration Detention Population

From 1990 to 30 April 2017

The total number of people in held immigration detention facilities has decreased by 303 to 1,392 compared with 1,695 at the end of April 2016.

Figure 1 – Population in Immigration Detention

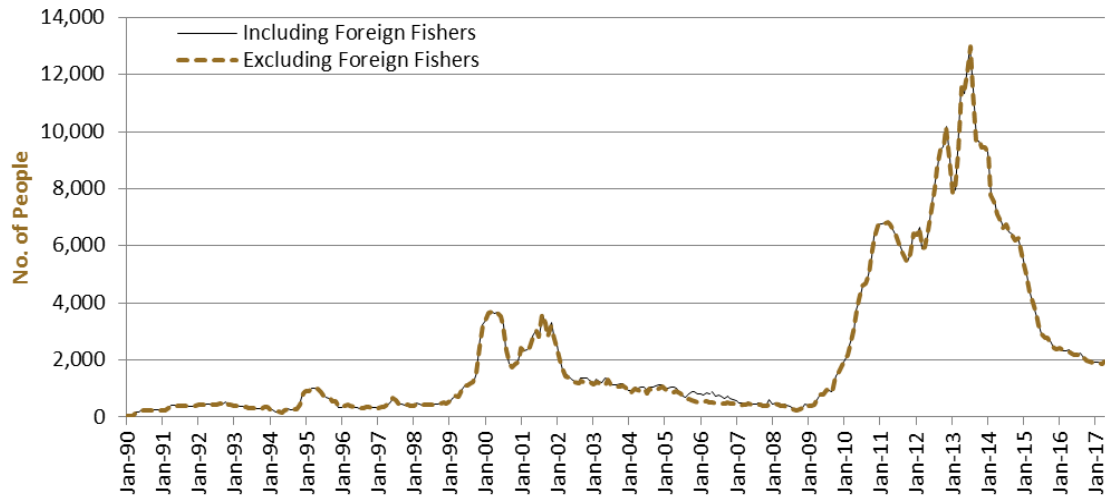


Figure 1 above, shows the number of people in immigration detention from 1990 to the date of this report. The trend had a consistent rise of people in immigration detention from January 2009 to January 2013, but has since had consistent decline.

People In Immigration Detention Facilities

Arrival Type

There were 467 people who arrived unlawfully by air or boat, in held immigration detention facilities at 30 April 2017 representing 33.5 per cent of the total immigration detention population.

There were also 925 people (66.5 per cent of the total immigration population) who arrived in Australia lawfully and were subsequently taken into immigration detention and had visa cancellations for either over staying or breaching their visa conditions.

Figure 2 – People in Held Immigration Detention Facilities by Detention Group

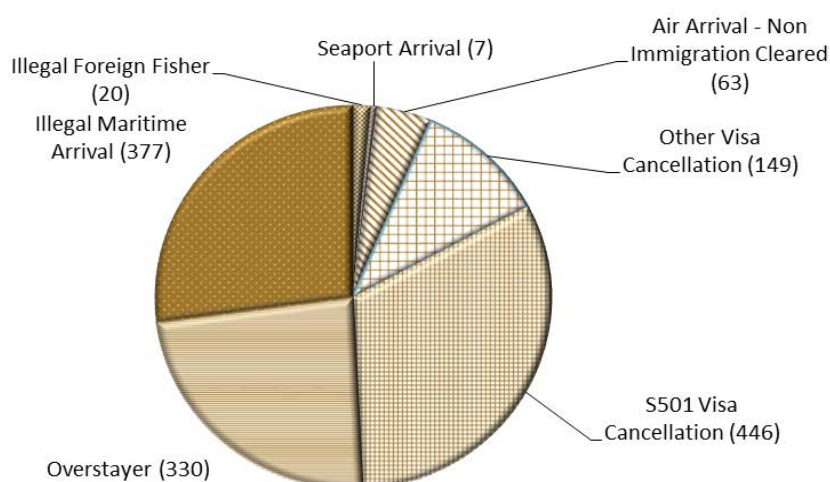


Figure 2 above, shows the number of people in held immigration detention facilities by detention group, including Overstayers, S501 and Other Visa Cancellations, Foreign Fishers, Irregular Maritime Arrivals, Unauthorised Air Arrivals, and if required – Inadequately Documented Crew Members and Others such as stowaways and ship deserters.

Table 4 – People in Held Immigration Detention Facilities by Detention Group at 30 April 2017

Place of immigration detention	S501 Visa Cancellation	IMA	Other Detention Group	Total	Change from Previous Summary 31/03/17
Christmas Island IDC	154	75	55	284	+ 4
Maribyrnong IDC	28	19	50	97	- 2
Perth IDC	17	<5	11	31	+ 8
Villawood IDC	157	105	255	517	+ 61
Yongah Hill IDC	73	93	83	249	- 15
Mainland APODs	0	0	23	23	+ 14
Total IDCs/APODs	429	295	477	1,201	+ 70
Adelaide ITA	<5	8	7	16	- 11
Brisbane ITA	16	27	19	62	- 6
Melbourne ITA	0	47	66	113	+ 11
Total in IRH and ITA	17	82	92	191	- 6
Total in IDC/F	446	377	569	1,392	+ 64

People In Immigration Detention

Nationality

At 30 April 2017, there were 1,392 people in held immigration detention facilities. Of these 1,392 people, 12.8 per cent were from New Zealand, 8.2 per cent were from Vietnam, 7.5 per cent were from Iran, 6.8 per cent were from Malaysia and 6.7 per cent were from Sri Lanka.

Table 5 – People in Held Immigration Detention Facilities by Nationality at 30 April 2017

Nationalities	Adult Male	Adult Female	Child Male (<18 years)	Child Female (<18 years)	Total
New Zealand	166	12	0	0	178
Vietnam	102	12	0	0	114
Iran	92	12	0	0	104
Malaysia	72	22	0	0	94
Sri Lanka	93	0	0	0	93
China	57	14	0	0	71
India	52	<5	0	0	54
Afghanistan	49	0	0	0	49
Iraq	47	0	0	0	47
Other	541	46	<5	0	588
Total	1,271	120	<5	0	1,392

At 30 April 2017, 556 were people living in the community after being approved for a residence determination. Of these 556 people, 48.4 per cent were from Iran, 12.2 per cent were from Sri Lanka, 10.3 per cent were Stateless and 5.8 per cent were from Vietnam.

Table 6 – People in the Community under Residence Determination by Nationality at 30 April 2017

Nationalities	Adult Male	Adult Female	Child Male (<18 years)	Child Female (<18 years)	Total
Iran	97	81	51	40	269
Sri Lanka	17	16	24	11	68
Stateless	17	14	12	14	57
Vietnam	11	8	8	5	32
Iraq	10	7	6	7	30
Other	36	26	24	14	100
Total	188	152	125	91	556

Children In Immigration Detention

At 30 April 2017 there were less than five children (aged less than 18 years) in Immigration Residential Housing, Immigration Transit Accommodation and Alternative Places of Detention.

Figure 3 – Children in Immigration Residential Housing, Immigration Transit Accommodation and Alternative Places of Detention

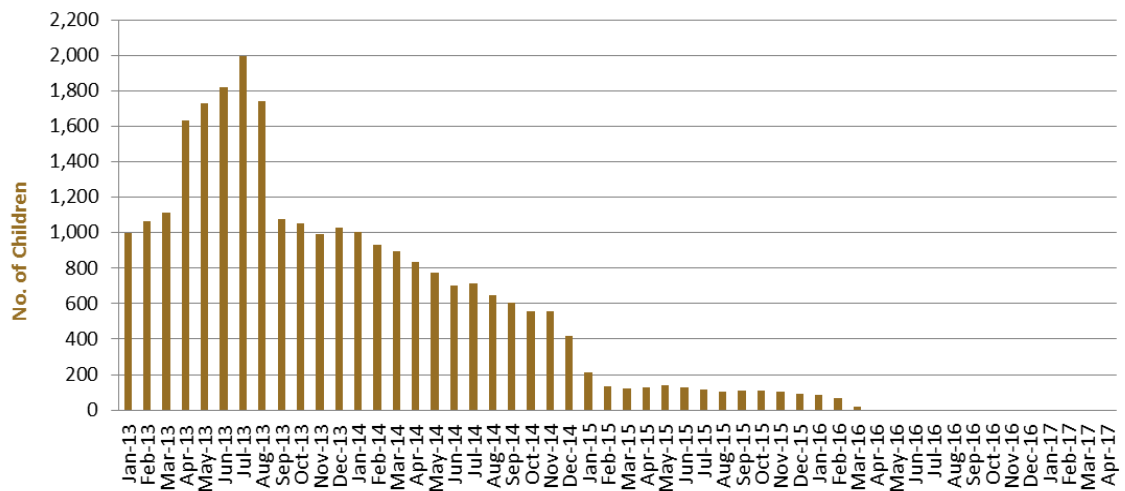


Figure 3 above, shows the number of children in immigration detention facilities and alternative places of detention from January 2013 to the date of this report. The continuous increase in the number of children in detention facilities from April 2013 to Aug 2013 was due to a rapid increase in irregular maritime arrivals during this period. The number of children in immigration detention facilities reduced in September 2013, as children completed mandatory processing and were transferred into the community. The number of children in detention facilities continued to decline during the late 2013 and 2014, with further reduction in January 2015.

At 30 April 2017, the number of children living in the community after being approved for a residence determination decreased by one to 216 from 217 in the previous report.

Figure 4 – Children in the Community under Residence Determination

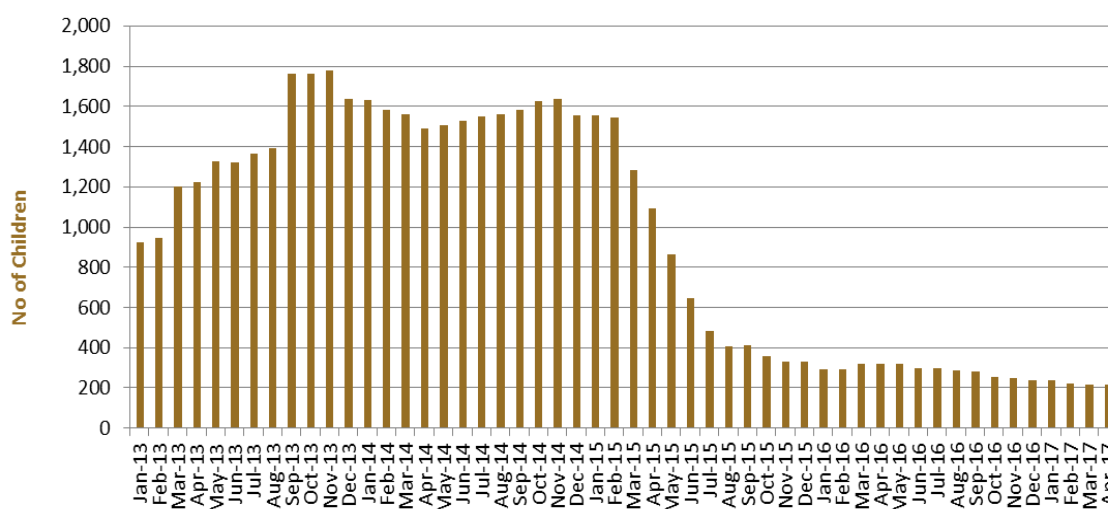


Figure 4 above, shows the number of children in the community under residence determination from January 2012 to the date of this report. The number of children in the community under residence determination, has levelled off at its lowest number since the peak in November 2013, as a result of releases into the community on Bridging E visas.

Table 7 – Children in Immigration Detention and IMA Children in the Community on a Bridging E Visa at 30 April 2017

Placement Type	Children
Immigration Residential Housing	0
Immigration Transit Accommodation	0
Alternative Places of Detention	<5
Total Children in Immigration Detention Facilities	<5
Total Children in the Community under a Residence Determination	216
Total IMA Children in the Community on a Bridging E visa (including in re-grant process)	3,818

Time In Immigration Detention Facilities

At 30 April 2017, there were 1,392 people in immigration detention facilities. Of these 1,392 people, 37.2 per cent had been detained for 91 days or less and 61.1 per cent had been detained for 365 days or less.

Table 8 – Length of Time of People in Held Immigration Detention Facilities at 30 April 2017

Period Detained	Total	% of Total
7 days or less	103	7.4%
8 days - 31 days	191	13.7%
32 days - 91 days	224	16.1%
92 days - 182 days	150	10.8%
183 days - 365 days	183	13.1%
366 days - 547 days	112	8.0%
548 days - 730 days	115	8.3%
Greater than 730 days	314	22.6%
Total	1,392	100%

At 30 April 2017, the average period of time for people held in detention facilities was 450 days.

Figure 5 – Average Number of Days of People in Held Immigration Detention Facilities only

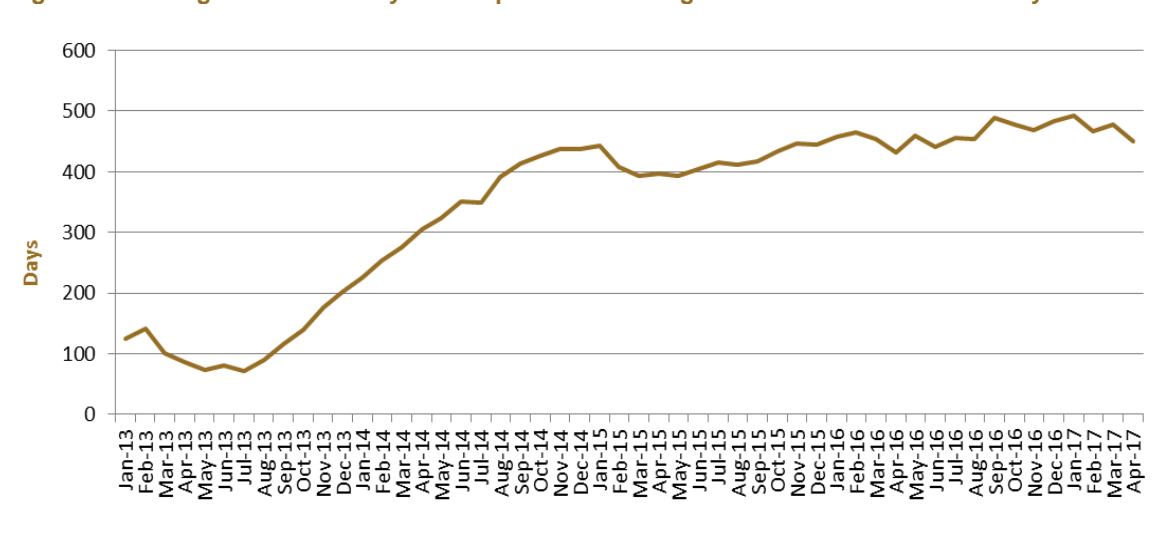


Figure 5 above, shows the average days in held immigration detention only by month from January 2013 to the date of this report. The average period of time for people held in detention facilities steadily increased from July 2013 to January 2015. Between January 2015 and March 2015, the average period of time for people in held detention facilities decreased.

Time In Community Under Residence Determination

Of the 556 people in the community under residence determination, as at 30 April 2017, 8 per cent had been in the community for 91 days or less and 21 per cent had been in the community for 365 days or less.

Table 9 – Length of Time of People in Community under Residence Determination at 30 April 2017

Period Detained	Total	% of Total
7 days or less	0	0.0%
8 days - 31 days	16	2.9%
32 days - 91 days	28	5.0%
92 days - 182 days	29	5.2%
183 days - 365 days	44	7.9%
366 days - 547 days	235	42.3%
548 days - 730 days	43	7.7%
Greater than 730 days	161	29.0%
Total	556	100%