



Australian Government
Department of Immigration
and Border Protection



Australian
BORDER FORCE

Immigration Detention and Community Statistics Summary

30 December 2015

Table of Contents

Immigration Detention and Community Statistics Summary.....	1
About this report.....	3
Enquiries	3
Acronyms	3
Immigration Detention And Community Statistics Summary	4
Community Population By State/Territory	5
Immigration Detention Population	6
From 1990 to 30 December 2015.....	6
People In Immigration Detention Facilities.....	7
Arrival Type.....	7
People in Immigration Detention	8
Nationality	8
Children In Immigration Detention.....	9
Time In Immigration Detention Facilities	11
Time In Community Detention.....	12

About this report

This report provides an overview of the number of people in immigration detention and Regional Processing Centres as at midnight on the date of the report. The report is produced on a monthly basis.

Data is sourced from several departmental processing and recording systems. Data relating to the immigration detention population is dynamic and there can be delays in transmission of information from the department's immigration detention network operations. Variations in figures between this report and previous issues can occur. Due to these issues, data from the current financial year should always be considered provisional.

Further information about immigration detention is available at:

<http://www.border.gov.au/Busi/Comp/Immigration-detention>

Enquiries

Comments or enquiries concerning this report should be sent using the department's client service feedback form quoting the name and date of the report.

See: <http://www.border.gov.au/about/contact/make-enquiry/enquiries-and-feedback>

Acronyms

Table 1 – Acronyms used in this document

Acronym	Description
APOD	Alternative Place of Detention
IDC/F	Immigration Detention Centre/Facility
IRH	Immigration Residential Housing
ITA	Immigration Transit Accommodation
RPC	Regional Processing Centre

Immigration Detention And Community Statistics Summary

At 30 December 2015, there were 1792 people in immigration detention facilities, including 1,647 in immigration detention on the mainland and 145 in immigration detention on Christmas Island.

A further 603 people were living in the community after being approved for a residence determination and 28,919 were living in the community after grant of a Bridging Visa E.

Table 2 – People in Immigration Detention Facilities (IDFs), Alternative Places of Detention (APODs), Regional Processing Centres (RPCs) and the Community at 30 December 2015

Place of immigration detention	Men	Women	Children	Total	Change from Previous Summary 30/11/15
Christmas Island IDC	145	0	0	145	- 24
Maribyrnong IDC	109	11	0	120	+ 18
Perth IDC	19	7	0	26	- 14
Villawood IDC	354	37	0	391	+ 33
Yongah Hill IDC	346	0	0	346	- 32
Christmas Island APODs	0	0	0	0	0
Mainland APODs	392	84	59	535	- 45
Total IDCs/APODs	1,365	139	59	1,563	- 64
Perth IRH	5	5	3	13	0
Sydney IRH	5	6	8	19	- 8
Adelaide ITA	13	1	0	14	- 3
Brisbane ITA	34	30	11	75	+ 20
Melbourne ITA	67	31	10	108	- 5
Total in IRH and ITA	124	73	32	229	+ 4
Total in Facility	1,489	212	91	1,792	- 60
Total in Community under Residence Determination	156	118	329	603	+ 18
Total in Community on Bridging Visa E (Including people in a re-grant process)	21,557	3,379	3,983	28,919	- 89
Republic of Nauru (RPC)	390	79	68	537	- 6
Manus Province, Papua New Guinea (RPC)	922	0	0	922	- 4
Total RPCs	1,312	79	68	1,459	- 10

Community Population By State/Territory

Of the 603 people approved for a residence determination to live in the community, 33.3 per cent were in Victoria, 24.0 per cent in Queensland, 23.5 per cent in New South Wales, 9.0 per cent in Western Australia, 8.1 per cent in South Australia, 1.0 per cent in the Australian Capital Territory and 1.0 per cent in Tasmania.

Table 3 – Community Detention Population by State/Territory at 30 December 2015

State/Territory	Adult Male	Adult Female	Child Male (<18 years)	Child Female (<18 years)	Total
Victoria	55	33	80	33	201
Queensland	40	32	45	28	145
New South Wales	30	29	50	33	142
Western Australia	18	13	19	4	54
South Australia	8	10	14	17	49
Australian Capital Territory	3	0	2	1	6
Tasmania	2	1	3	0	6
Total	156	118	213	116	603

Immigration Detention Population

From 1990 to 30 December 2015

The number of people in immigration detention continues to reduce as a result of releases into the community.

Figure 1 – Population in Immigration Detention

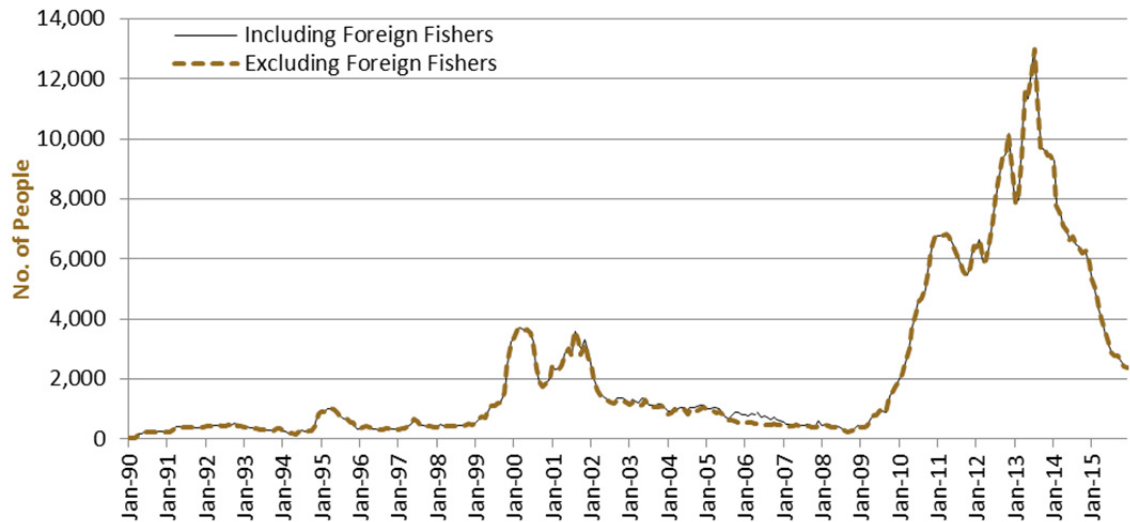


Figure 1 above, shows the number of people in immigration detention from 1990 to the date of this report. The trend had a consistent rise of people in immigration detention from January 2009 to January 2013, but has since decreased and continues to decline steadily.

People In Immigration Detention Facilities

Arrival Type

There were 893 people, who arrived unlawfully by air or boat, in held immigration detention facilities at 30 December 2015, representing approximately 50.0 per cent of the total immigration detention population.

There were also 899 people (about 50.0 per cent of the total immigration population) who arrived in Australia lawfully and were subsequently taken into immigration detention and had visa cancellations for either over staying or breaching their visa conditions.

Figure 2 – People in Held Immigration Detention Facilities by Arrival Type

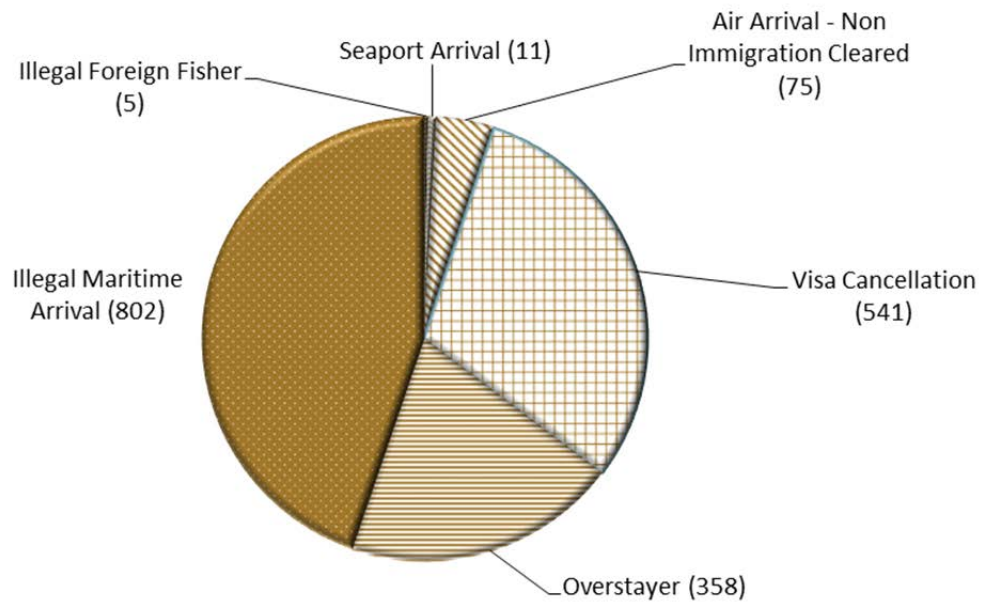


Figure 2 above, shows the number of people in held immigration detention facilities by arrival type, including Visa Overstayers, Visa Cancellations, Foreign Fishers, Irregular Maritime Arrivals, Unauthorised Air Arrivals, and if required – Inadequately Documented Crew Members and Others such as stowaways and ship deserters.

People in Immigration Detention

Nationality

At 30 December 2015, there were 1,792 people in held immigration detention facilities. Of these 1,792 people, around 18.6 per cent were from Iran, 10.2 per cent were from New Zealand, 8.0 per cent were from Sri Lanka, 6.5 per cent were from China and 6.3 per cent were from Vietnam.

Table 4 – People in Held Immigration Detention Facilities at 30 December 2015

Nationalities	Adult Male	Adult Female	Child Male (<18 years)	Child Female (<18 years)	Total
Iran	237	55	25	17	334
New Zealand	158	25	0	0	183
Sri Lanka	127	7	7	3	144
China	94	21	1	1	117
Vietnam	91	18	3	0	112
Afghanistan	73	2	0	0	75
Bangladesh	60	1	0	1	62
Stateless	46	5	2	5	58
India	50	2	3	2	57
Other	553	76	15	6	650
Total	1,489	212	56	35	1,792

At 30 December 2015, 603 were people living in the community after being approved for a residence determination. Of these 603 people, around 30.2 per cent were from Iran, 16.9 per cent were from Sri Lanka, 13.6 per cent were from Afghanistan and 10.8 per cent were from Vietnam.

Table 5 – People in the community under Residence Determination at 30 December 2015

Nationalities	Adult Male	Adult Female	Child Male (<18 years)	Child Female (<18 years)	Total
Iran	57	52	39	34	182
Sri Lanka	28	16	35	23	102
Afghanistan	15	1	64	2	82
Vietnam	18	12	18	17	65
Stateless	14	11	20	13	58
Other	24	26	37	27	114
Total	156	118	213	116	603

Children In Immigration Detention

At 30 December 2015, there were 91 children (aged less than 18 years) in Immigration Residential Housing, Immigration Transit Accommodation and Alternative Places of Detention.

Figure 3 – Children in Immigration Residential Housing, Immigration Transit Accommodation and Alternative Places of Detention

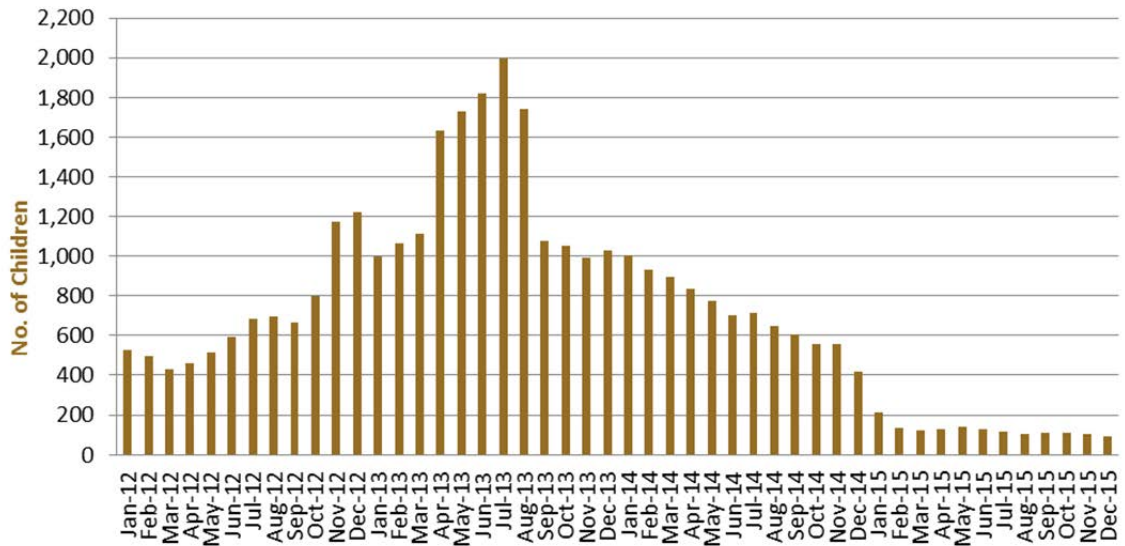


Figure 3 above, shows the number of children in immigration detention facilities and alternative places of detention from January 2012 to the date of this report. The increase in the number of children in detention facilities in April and June 2013 was due to a rapid increase in irregular maritime arrivals during this period. The number of children in immigration detention facilities reduced in September 2013, as children completed mandatory processing and were transferred into the community. The numbers of children in detention facilities continued to trend down during late 2013 and 2014, with a further reduction in January 2015. The numbers have levelled off since February 2015.

The number of children living in the community after being approved for a residence determination increased in December 2015, to 329 children.

Figure 4 – Children in the community under Residence Determination

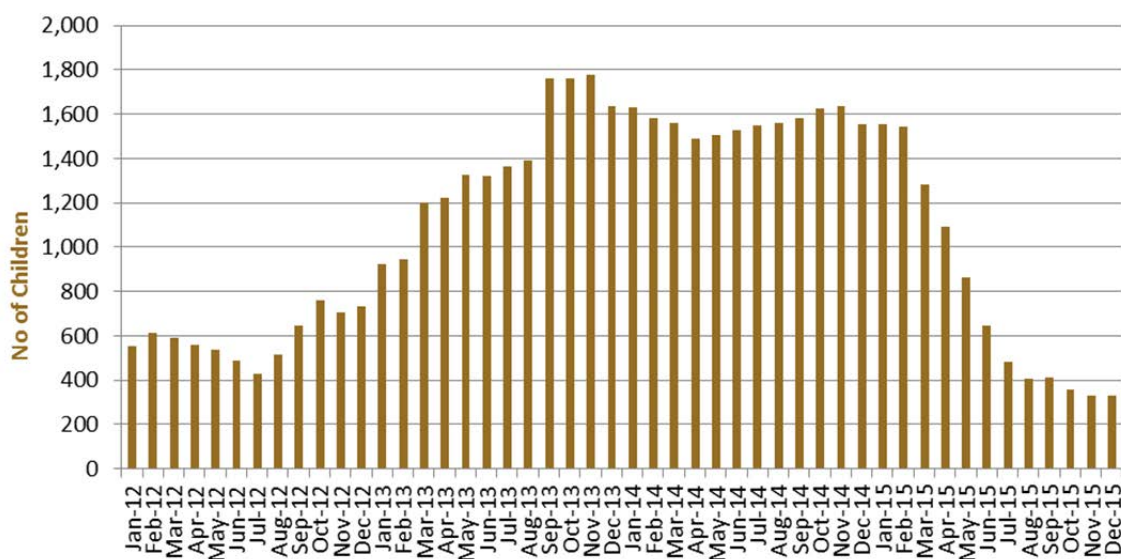


Figure 4 above, shows the number of children in community detention under residence determination from January 2012 to the date of this report. The number of children, in community detention under residence determination, has levelled off at its lowest number since the peak in November 2013, as a result of releases into the community on Bridging E visas.

Table 6 – Children in Immigration Detention and in the Community at 30 December 2015

Placement Type	Children
Immigration Residential Housing	11
Immigration Transit Accommodation	21
Alternative Places of Detention	59
Total in Facility	91
Total in Community under a Residence Determination	329
Total in Community on a Bridging E visa (including in re-grant process)	3,983

Time In Immigration Detention Facilities

At 30 December 2015, there were 1,792 people in immigration detention facilities. Of these 1,792 people, around 23.4 per cent had been detained for 91 days or less and 56.4 per cent had been detained for 365 days or less.

Table 7 – Length of time in held immigration detention facilities at 30 December 2015

Period Detained	Total	% of Total
7 days or less	48	2.7%
8 days - 31 days	188	10.5%
32 days - 91 days	183	10.2%
92 days - 182 days	244	13.6%
183 days - 365 days	348	19.4%
366 days - 547 days	199	11.1%
548 days - 730 days	167	9.3%
Greater than 730 days	415	23.2%
Total	1,792	100%

The average period of time for people held in detention facilities has remained similar to last month, at 445 days, at 30 December 2015.

Figure 5 – Average number of days in held immigration detention facilities only

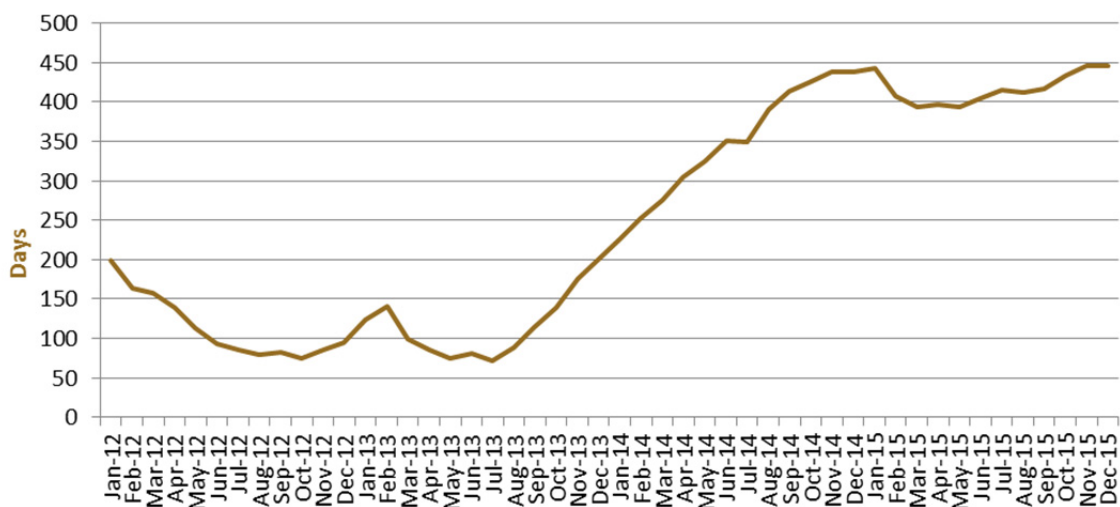


Figure 5 above, shows the average days in held immigration detention only by month from January 2012 to the date of this report. The average period of time for people held in detention facilities steadily increased from July 2013 to January 2015. Between January 2015 and March 2015, the average period of time for people in held detention facilities decreased. Since May 2015, the average days in held immigration detention has increased steadily, exceeding the peak of January 2015.

Time In Community Detention

Of the 603 people in Community Detention, at 30 December 2015, 5.8 per cent had been in Community Detention for 91 days or less and 22.4 per cent had been in Community Detention for 365 days or less.

Table 8 – People in Community Detention by Length of Time in Community Detention at 30 December 2015

Period Detained	Total	% of Total
7 days or less	2	0.3%
8 days - 31 days	22	3.6%
32 days - 91 days	11	1.8%
92 days - 182 days	28	4.6%
183 days - 365 days	72	11.9%
366 days - 547 days	82	13.6%
548 days - 730 days	36	6.0%
Greater than 730 days	350	58.0%
Total	603	100%