



Australian Government
Department of Immigration
and Border Protection



Australian
BORDER FORCE

Immigration Detention and Community Statistics Summary

30 November 2015

Table of Contents

Immigration Detention and Community Statistics Summary.....	1
About this report.....	3
Enquiries	3
Acronyms	3
Immigration Detention And Community Statistics Summary	4
Community Population By State/Territory	5
Immigration Detention Population	6
From 1990 to 30 November 2015.....	6
People In Immigration Detention Facilities.....	7
Arrival Type.....	7
People in Immigration Detention	8
Nationality	8
Children In Immigration Detention.....	9
Time In Immigration Detention Facilities	11
Time In Community Detention.....	12

About this report

This report provides an overview of the number of people in immigration detention and Regional Processing Centres as at midnight on the date of the report. The report is produced on a monthly basis.

Data is sourced from several departmental processing and recording systems. Data relating to the immigration detention population is dynamic and there can be delays in transmission of information from the department's immigration detention network operations. Variations in figures between this report and previous issues can occur. Due to these issues, data from the current financial year should always be considered provisional.

Further information about immigration detention is available at:

<http://www.border.gov.au/Busi/Comp/Immigration-detention>

Enquiries

Comments or enquiries concerning this report should be sent using the department's client service feedback form quoting the name and date of the report.

See: <http://www.border.gov.au/about/contact/make-enquiry/enquiries-and-feedback>

Acronyms

Table 1 – Acronyms used in this document

Acronym	Description
APOD	Alternative Place of Detention
IDC/F	Immigration Detention Centre/Facility
IRH	Immigration Residential Housing
ITA	Immigration Transit Accommodation
RPC	Regional Processing Centre

Immigration Detention And Community Statistics Summary

As at 30 November 2015, there were 1,852 people in immigration detention facilities, including 1,683 in immigration detention on the mainland and 169 in immigration detention on Christmas Island.

A further 585 people were living in the community after being approved for a residence determination and 29,008 were living in the community after grant of a Bridging Visa E.

Table 2 – People in Immigration Detention Facilities (IDFs), Alternative Places of Detention (APODs), Regional Processing Centres (RPCs) and the Community as at 30 November 2015

Place of immigration detention	Men	Women	Children	Total	Change from Previous Summary 31/10/15
Christmas Island IDC	169	0	0	169	- 36
Maribyrnong IDC	91	11	0	102	- 5
Perth IDC	26	14	0	40	+ 4
Villawood IDC	328	30	0	358	- 6
Yongah Hill IDC	378	0	0	378	- 27
Christmas Island APODs	0	0	0	0	0
Mainland APODs	426	89	65	580	- 17
Total IDCs/APODs	1,418	144	65	1,627	- 87
Perth IRH	5	5	3	13	0
Sydney IRH	7	9	11	27	0
Adelaide ITA	15	2	0	17	- 8
Brisbane ITA	27	20	8	55	+ 3
Melbourne ITA	64	32	17	113	- 5
Total in IRH and ITA	118	68	39	225	- 10
Total Facility	1,536	212	104	1,852	- 97
Total Community under Residence Determination	144	110	331	585	- 47
Total Community on Bridging Visa E (Including people in a re-grant process)	21,647	3,382	3,979	29,008	- 11
Republic of Nauru (RPC)	393	80	70	543	- 78
Manus Province, Papua New Guinea (RPC)	926	0	0	926	- 3
Total RPCs	1,319	80	70	1,469	- 81

Community Population By State/Territory

Of the 585 people approved for a residence determination to live in the community, 33.3 per cent were in Victoria, 24.6 per cent in Queensland, 22.6 per cent in New South Wales, 9.2 per cent in South Australia, 8.2 per cent in Western Australia, 1.0 per cent in the Australian Capital Territory and 1.0 per cent in Tasmania.

Table 3 – Community Detention Population by State/Territory as at 30 November 2015

State/Territory	Adult Male	Adult Female	Child Male (<18 years)	Child Female (<18 years)	Total
Victoria	49	31	83	32	195
Queensland	40	31	45	28	144
New South Wales	25	25	51	31	132
South Australia	10	11	15	18	54
Western Australia	15	11	20	2	48
Australian Capital Territory	3	0	2	1	6
Tasmania	2	1	3	0	6
Total	144	110	219	112	585

Immigration Detention Population

From 1990 to 30 November 2015

The number of people in immigration detention continues to reduce as a result of releases into the community.

Figure 1 – Population in Immigration Detention

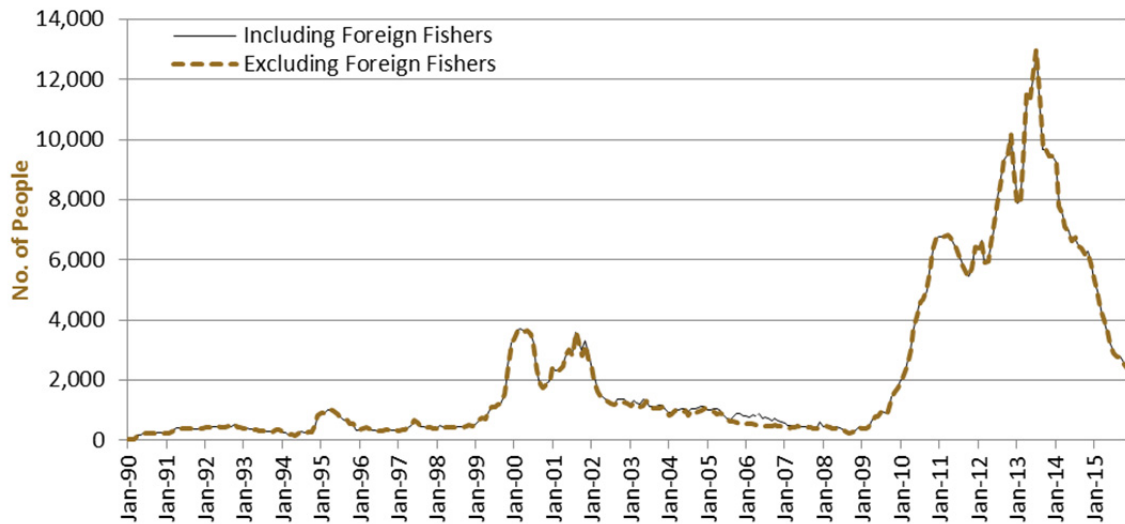


Figure 1 above, shows the number of people in immigration detention from 1990 to the date of this report. The trend had a consistent rise of people in immigration detention from January 2009 to January 2013, but has since decreased and continues to decline steadily.

People In Immigration Detention Facilities

Arrival Type

The number of people in held immigration detention facilities, who arrived unlawfully by air or boat as at 30 November 2015 was 954, representing approximately 52.0 per cent of the total immigration detention population.

There were also 898 people (about 48.0 per cent of the total immigration population) who arrived in Australia lawfully and were subsequently taken into immigration detention and had visa cancellations for either over staying or breaching their visa conditions.

Figure 2 – People in Held Immigration Detention Facilities by Arrival Type

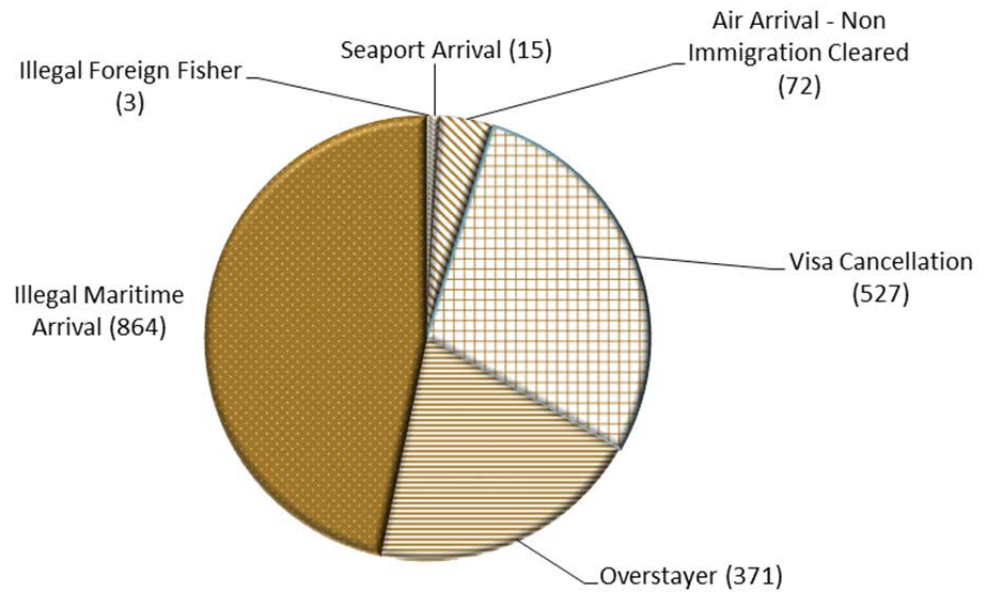


Figure 2 above, shows the number of people in held immigration detention facilities by arrival type, including Visa Overstayers, Visa Cancellations, Foreign Fishers, Irregular Maritime Arrivals, Unauthorised Air Arrivals, and if required – Inadequately Documented Crew Members and Others such as stowaways and ship deserters.

People in Immigration Detention

Nationality

As at 30 November 2015, there were 1,852 people in held immigration detention facilities. Of these 1,852 people, around 19.5 per cent were from Iran, 10.5 per cent were from New Zealand, 7.9 per cent were from Sri Lanka, 6.6 per cent were from China and 5.2 per cent were from Vietnam.

Table 4 – People in Held Immigration Detention Facilities as at 30 November 2015

Nationalities	Adult Male	Adult Female	Child Male (<18 years)	Child Female (<18 years)	Total
Iran	251	61	27	23	362
New Zealand	173	21	0	0	194
Sri Lanka	130	7	7	3	147
China	95	23	2	2	122
Vietnam	84	11	1	0	96
Afghanistan	71	2	0	0	73
Stateless	55	7	6	5	73
Bangladesh	62	2	1	1	66
Iraq	49	5	1	2	57
Other	566	73	16	7	662
Total	1,536	212	61	43	1,852

As at 30 November 2015, 585 were people living in the community after being approved for a residence determination. Of these 585 people, around 28.4 per cent were from Iran, 17.3 per cent were from Sri Lanka, 13.8 per cent were from Afghanistan and 11.3 per cent were from Vietnam.

Table 5 – People in the community under Residence Determination as at 30 November 2015

Nationalities	Adult Male	Adult Female	Child Male (<18 years)	Child Female (<18 years)	Total
Iran	51	46	39	30	166
Sri Lanka	26	16	37	22	101
Afghanistan	14	1	64	2	81
Vietnam	18	12	19	17	66
Stateless	13	11	22	13	59
Other	22	24	38	28	112
Total	144	110	219	112	585

Children In Immigration Detention

As at 30 November 2015, there were 104 children (aged under 18 years) in Immigration Residential Housing, Immigration Transit Accommodation and Alternative Places of Detention.

Figure 3 – Children in Immigration Residential Housing, Immigration Transit Accommodation and Alternative Places of Detention

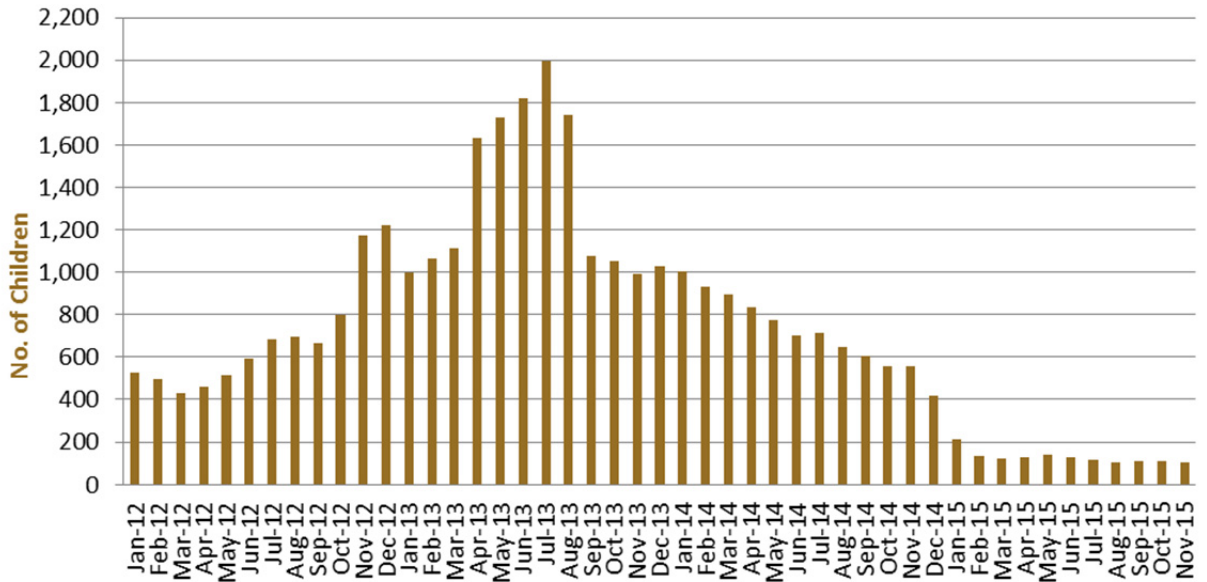


Figure 3 above, shows the number of children in immigration detention facilities and alternative places of detention from January 2012 to the date of this report. The increase in the number of children in detention facilities in April and June 2013 was due to a rapid increase in irregular maritime arrivals during this period. The number of children in immigration detention facilities reduced in September 2013, as children completed mandatory processing and were transferred into the community. The numbers of children in detention facilities continued to trend down during late 2013 and 2014, with a further reduction in January 2015. The numbers have levelled off since February 2015.

The number of children living in the community after being approved for a residence determination decreased in November 2015, to 331 children.

Figure 4 – Children in the community under Residence Determination

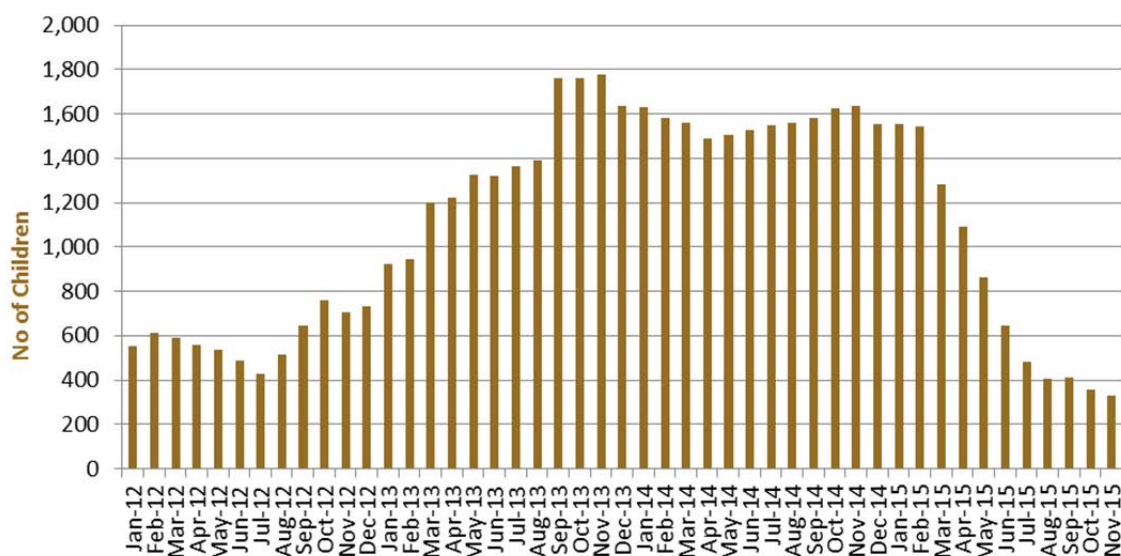


Figure 4 above, shows the number of children in community detention under residence determination from January 2012 to the date of this report. The number of children, in community detention under residence determination, has levelled off at its lowest number since the peak in November 2013, as a result of releases into the community on Bridging E visas.

Table 6 – Children in Immigration Detention and in the Community as at 30 November 2015

Placement Type	Children
Immigration Residential Housing	14
Immigration Transit Accommodation	25
Alternative Places of Detention	65
Total Facility	104
Total in the Community under a Residence Determination	331
Total in the Community on a Bridging E visa (including in re-grant process)	3,979

Time In Immigration Detention Facilities

As at 30 November 2015, there were 1,852 people in immigration detention facilities. Of these 1,852 people, around 23.1 per cent had been detained for 91 days or less and 55.3 per cent had been detained for 365 days or less.

Table 7 – Length of time in held immigration detention facilities as at 30 November 2015

Period Detained	Total	% of Total
7 days or less	64	3.5%
8 days - 31 days	139	7.5%
32 days - 91 days	224	12.1%
92 days - 182 days	223	12.0%
183 days - 365 days	375	20.2%
366 days - 547 days	207	11.2%
548 days - 730 days	184	9.9%
Greater than 730 days	436	23.5%
Total	1,852	100%

The average period of time for people held in detention facilities has increased since May 2015, to 446 days as at 30 November 2015.

Figure 5 – Average number of days in held immigration detention facilities only

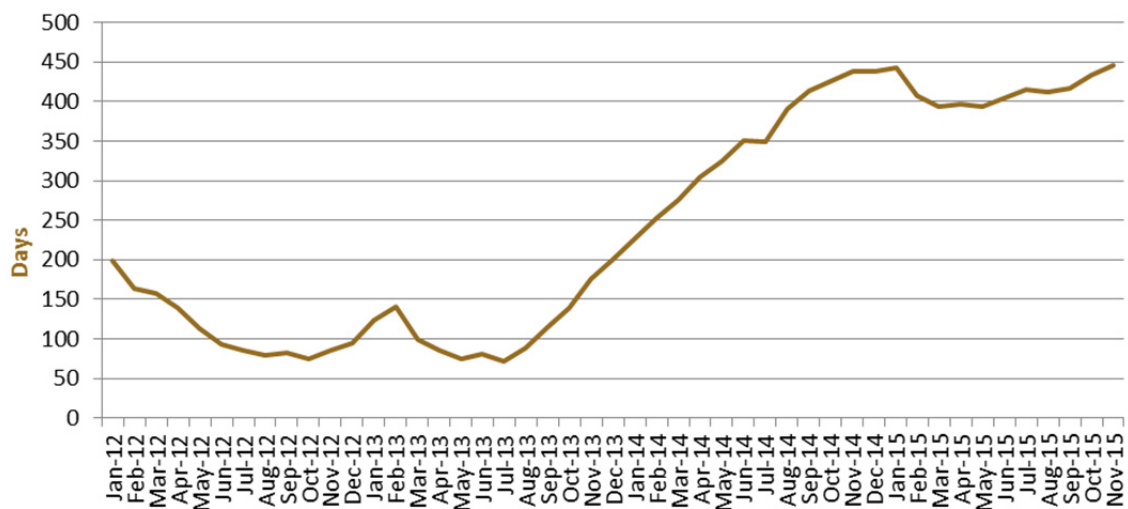


Figure 5 above, shows the average days in held immigration detention only by month from January 2012 to the date of this report. The average period of time for people held in detention facilities steadily increased from July 2013 to January 2015. Between January 2015 and March 2015, the average period of time for people in held detention facilities decreased. Since May 2015, the average days in held immigration detention has increased steadily, exceeding the peak of January 2015.

Time In Community Detention

Of the 585 people in Community Detention, as at 30 November 2015, 2.7 per cent had been in Community Detention for 91 days or less and 23.6 per cent had been in Community Detention for 365 days or less.

Table 8 – People in Community Detention by Length of Time in Community Detention as at 30 November 2015

Period Detained	Total	% of Total
7 days or less	3	0.5%
8 days - 31 days	1	0.2%
32 days - 91 days	12	2.1%
92 days - 182 days	40	6.8%
183 days - 365 days	82	14.0%
366 days - 547 days	62	10.6%
548 days - 730 days	37	6.3%
Greater than 730 days	348	59.5%
Total	585	100%