



Australian Government
Department of Immigration
and Border Protection



Australian
BORDER FORCE

Immigration Detention and Community Statistics Summary

31 July 2015

Table of Contents

Immigration Detention and Community Statistics Summary.....	1
About this report.....	3
Enquiries	3
Acronyms	3
Immigration Detention And Community Statistics Summary	4
Community Population By State/Territory.....	5
Immigration Detention Population.....	6
From 1990 to 30 June 2015	6
People In Immigration Detention Facilities.....	7
Arrival Type.....	7
People in Immigration Detention.....	8
Nationality	8
Children In Immigration Detention.....	9
Time In Immigration Detention Facilities.....	11
Time In Community Detention.....	12

About this report

This report provides an overview of the number of people in immigration detention and Regional Processing Centres as at midnight on the date of the report. The report is produced on a monthly basis.

Data is sourced from several departmental processing and recording systems. Data relating to the immigration detention population is dynamic and there can be delays in transmission of information from the department's immigration detention network operations. Variations in figures between this report and previous issues can occur. Due to these issues, data from the current financial year should always be considered provisional.

Further information about immigration detention is available at:

<http://www.border.gov.au/Busi/Comp/Immigration-detention>

Enquiries

Comments or enquiries concerning this report should be sent using the department's client service feedback form quoting the name and date of the report.

See: <http://www.border.gov.au/about/contact/make-enquiry/enquiries-and-feedback>

Acronyms

Table 1 – Acronyms used in this document

Acronym	Description
APOD	Alternative Place of Detention
IDC/F	Immigration Detention Centre/Facility
IRH	Immigration Residential Housing
ITA	Immigration Transit Accommodation
RPC	Regional Processing Centre

Immigration Detention And Community Statistics Summary

As at 31 July 2015, there were 2,015 people in immigration detention facilities, including 1,842 in immigration detention on the mainland and 173 in immigration detention on Christmas Island.

A further 878 people were living in the community after being approved for a residence determination and 28,890 were living in the community after grant of a Bridging Visa E.

Table 2 – People in Immigration Detention Facilities (IDFs), Alternative Places of Detention (APODs), Regional Processing Centres (RPCs) and the Community

Place of immigration detention	Men	Women	Children	Total	Change from Previous Summary 30/06/15
Christmas Island IDC	173	0	0	173	0
Maribyrnong IDC	127	10	0	137	+ 21
Perth IDC	32	5	0	37	+ 1
Villawood IDC	335	40	0	375	+ 10
Yongah Hill IDC	375	15	0	390	- 45
Christmas Island APODs	0	0	0	0	0
Mainland APODs	461	90	68	619	+ 7
Total IDCs/APODs	1,503	160	68	1,731	- 6
Perth IRH	3	3	0	6	- 2
Sydney IRH	7	10	18	35	- 6
Adelaide ITA	15	2	0	17	+ 1
Brisbane ITA	43	24	13	80	+ 5
Melbourne ITA	90	37	19	146	+ 10
Total in IRH and ITA	158	76	50	284	+ 8
Total Facility	1,661	236	118	2,015	+ 2
Total Community under Residence Determination	218	180	480	878	- 311
Total Community on Bridging Visa E (Including people in a re-grant process)	21,807	3,319	3,764	28,890	+ 302
Republic of Nauru (RPC)	439	111	87	637	- 18
Manus Province, Papua New Guinea (RPC)	942	0	0	942	- 3
Total RPCs	1,381	111	87	1,579	- 21

Community Population By State/Territory

Of the 878 people approved for a residence determination to live in the community, 36.8 per cent were in Victoria, 22.0 per cent in Queensland, 18.2 per cent in New South Wales, 11.3 per cent in Western Australia, 9.0 per cent in South Australia, 1.5 per cent in Tasmania and 1.3 per cent in the Australian Capital Territory.

Table 3 – Community Detention Population by State/Territory as at 31 July 2015

State/Territory	Adult Male	Adult Female	Child Male (<18 years)	Child Female (<18 years)	Total
Victoria	82	62	115	64	323
Queensland	51	42	61	39	193
New South Wales	32	34	58	36	160
Western Australia	29	22	33	15	99
South Australia	17	17	22	23	79
Tasmania	4	2	5	2	13
Australian Capital Territory	3	1	5	2	11
Total	218	180	299	181	878

Immigration Detention Population

From 1990 to 31 July 2015

The number of people in immigration detention continues to reduce as a result of releases into the community.

Figure 1 – Population in Immigration Detention

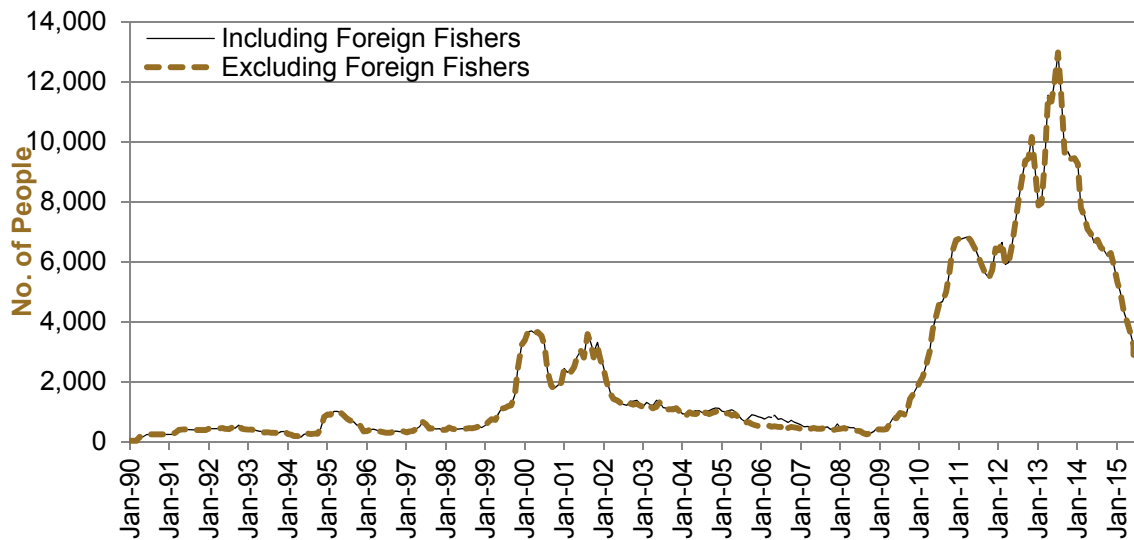


Figure 1 above, shows the number of people in immigration detention from 1990 to the date of this report. The trend had a consistent rise of people in immigration detention from January 2009 to January 2013, but has since decreased and continues to decline steadily.

People In Immigration Detention Facilities

Arrival Type

The number of people in held immigration detention facilities, who arrived unlawfully by air or boat as at 31 July 2015 was 1,098, representing approximately 54.0 per cent of the total immigration detention population.

There were also 917 people (about 46.0 per cent of the total immigration population) who arrived in Australia lawfully and were subsequently taken into immigration detention and had visa cancellations for either over staying or breaching their visa conditions.

Figure 2 – People in Held Immigration Detention Facilities by Arrival Type

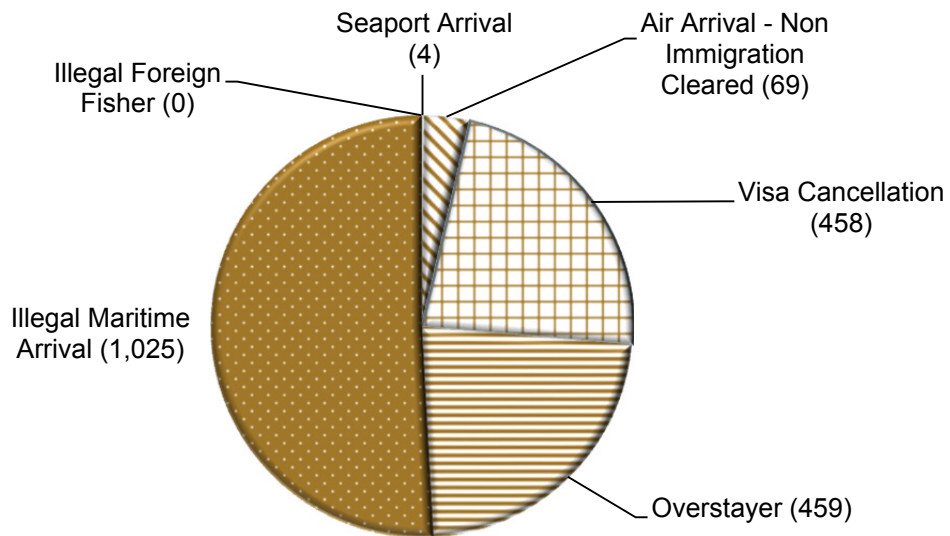


Figure 2 above, shows the number of people in held immigration detention facilities by arrival type, including Visa Overstayers, Visa Cancellations, Foreign Fishers, Irregular Maritime Arrivals, Unauthorised Air Arrivals, and if required – Inadequately Documented Crew Members and Others such as stowaways and ship deserters.

People in Immigration Detention

Nationality

As at 31 July 2015, there were 2,015 people in held immigration detention facilities. Of these 2,015 people, around 20.4 per cent were from Iran, 8.9 per cent were from Sri Lanka, 8.2 per cent were from New Zealand, 7.4 per cent were from China and 6.2 per cent were from Vietnam.

Table 4 – People in Held Immigration Detention Facilities as at 31 July 2015

Nationalities	Adult Male	Adult Female	Child Male (<18 years)	Child Female (<18 years)	Total
Iran	293	67	32	20	412
Sri Lanka	159	11	7	2	179
New Zealand	152	14	0	0	166
China	118	31	1	0	150
Vietnam	107	14	2	1	124
Stateless	62	8	7	4	81
Afghanistan	78	2	0	0	80
India	63	4	4	3	74
Iraq	58	5	3	2	68
Other	571	80	14	16	681
Total	1,661	236	70	48	2,015

As at 31 July 2015, 878 were people living in the community after being approved for a residence determination. Of these 878 people, around 29.0 per cent were from Iran, 17.4 per cent were from Sri Lanka, 13.4 per cent were Stateless and 11.2 per cent were from Afghanistan.

Table 5 – People in the community under Residence Determination as at 31 July 2015

Nationalities	Adult Male	Adult Female	Child Male (<18 years)	Child Female (<18 years)	Total
Iran	69	73	60	53	255
Sri Lanka	40	27	50	36	153
Stateless	32	21	40	25	118
Afghanistan	15	4	74	5	98
Vietnam	25	18	26	22	91
Other	37	37	49	40	163
Total	218	180	299	181	878

Children In Immigration Detention

As at 31 July 2015, there were 118 children (aged under 18 years) in Immigration Residential Housing, Immigration Transit Accommodation and Alternative Places of Detention.

Figure 3 – Children in Immigration Residential Housing, Immigration Transit Accommodation and Alternative Places of Detention

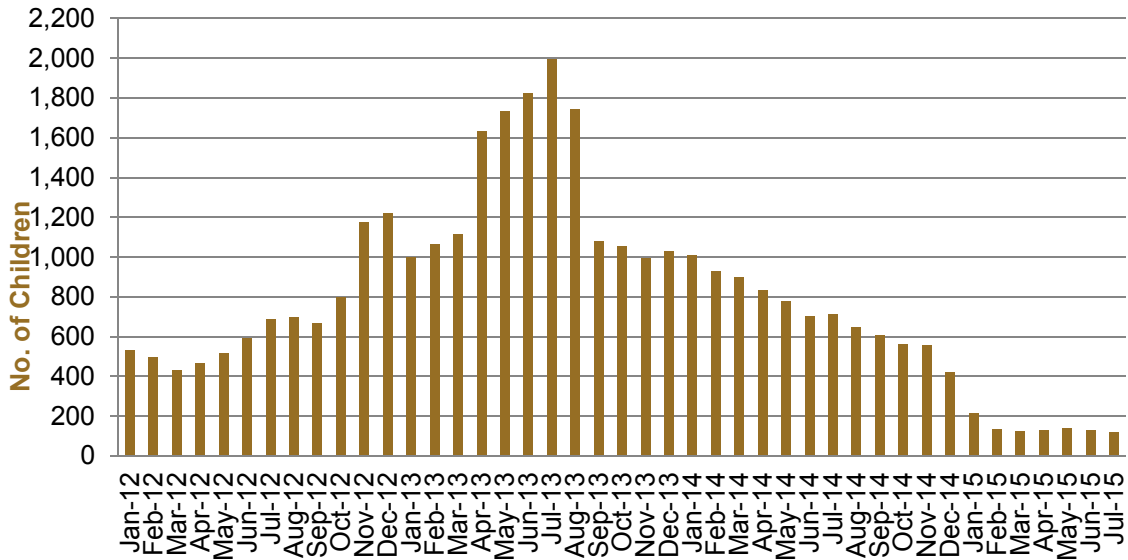


Figure 3 above, shows the number of children in immigration detention facilities and alternative places of detention from January 2012 to the date of this report. The increase in the number of children in detention facilities in April and June 2013 was due to a rapid increase in irregular maritime arrivals during this period. The number of children in immigration detention facilities reduced in September 2013, as children completed mandatory processing and were transferred into the community. The numbers of children in detention facilities continued to trend down during late 2013 and 2014, with a further reduction in January 2015.

The number of children living in the community after being approved for a residence determination decreased in July 2015 to 480 children.

Figure 4 – Children in the community under Residence Determination

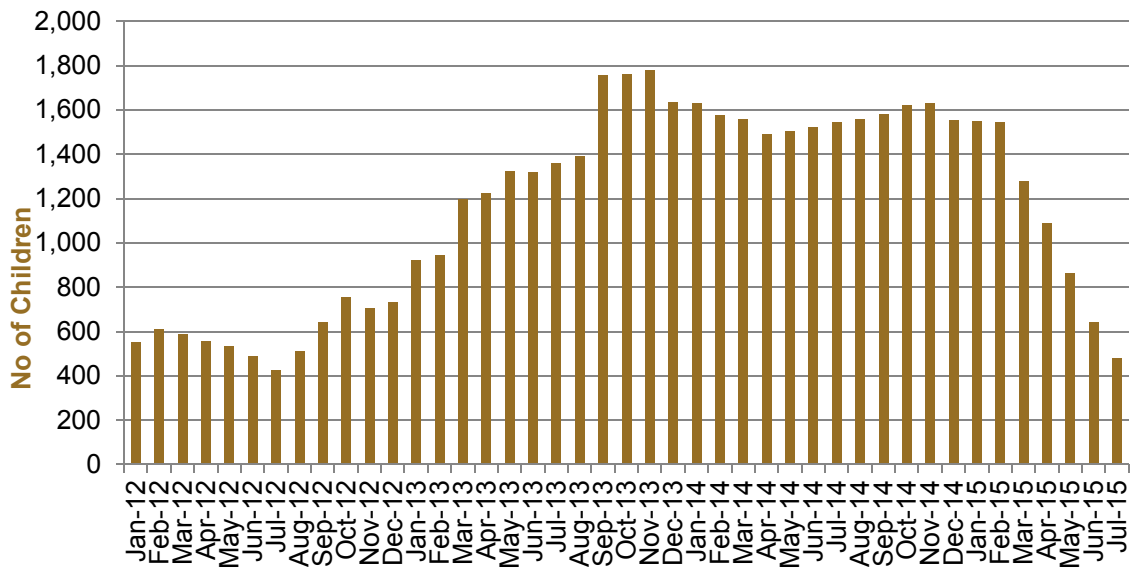


Figure 4 above, shows the number of children in community detention under residence determination from January 2012 to the date of this report. The number of children in community detention under residence determination has continued to decrease since February 2015 as a result of releases into the community on Bridging E visas.

Table 6 – Children in Immigration Detention and in the Community as at 31 July 2015

Placement Type	Children
Immigration Residential Housing	18
Immigration Transit Accommodation	32
Alternative Places of Detention	68
Total Facility	118
Total in the Community under a Residence Determination	480
Total in the Community on a Bridging E Visa (including people in a re-grant process)	3,764

Time In Immigration Detention Facilities

As at 31 July 2015, there were 2,015 people in immigration detention facilities. Of these 2,015 people, around 26.3 per cent had been detained for 91 days or less and 57.8 per cent had been detained for 365 days or less.

Table 7 – Length of time in held immigration detention facilities as at 31 July 2015

Period Detained	Total	% of Total
7 days or less	86	4.3%
8 days - 31 days	211	10.5%
32 days - 91 days	233	11.6%
92 days - 182 days	286	14.2%
183 days - 365 days	348	17.3%
366 days - 547 days	220	10.9%
548 days - 730 days	237	11.8%
Greater than 730 days	394	19.6%
Total	2015	100.0%

The average period of time for people held in detention facilities has remained similar to last month, at 415 days as at 31 July 2015.

Figure 5 –Average number of days in held immigration detention facilities only

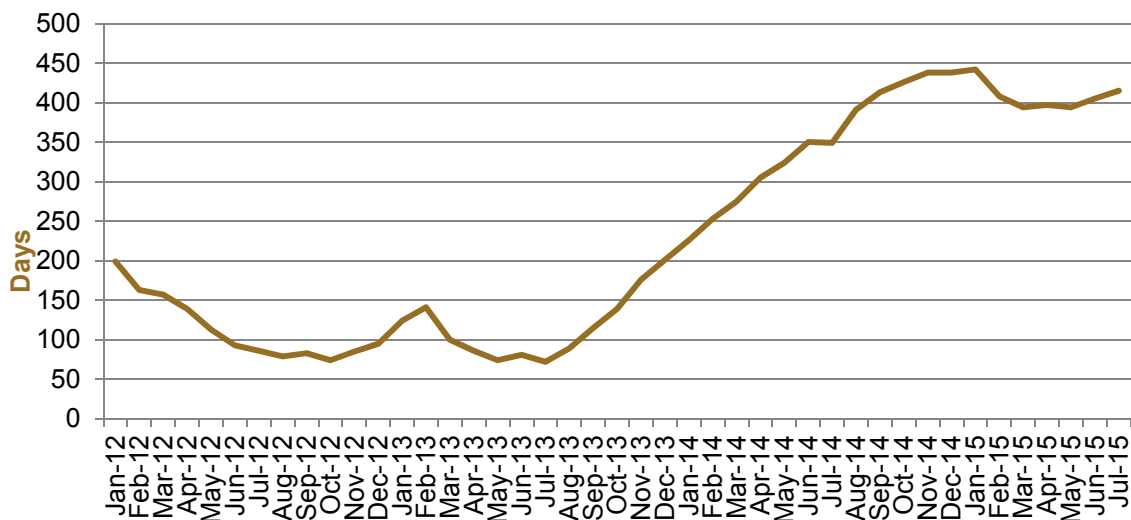


Figure 5 above, shows the average days in held immigration detention only by month from January 2012 to the date of this report. The average period of time for people held in detention facilities steadily increased from July 2013 to January 2015. Between January 2015 and March 2015, the average period of time for people in held detention facilities decreased then steadied as at the date of this report.

Time In Community Detention

Of the 878 people in Community Detention, as at 31 July 2015, 3.9 per cent had been in Community Detention for 91 days or less and 24.5 per cent had been in Community Detention for 365 days or less.

Table 8 – People in Community Detention by Length of Time in Community Detention

Period Detained	Total	% of Total
7 days or less	1	0.1%
8 days - 31 days	9	1.0%
32 days - 91 days	24	2.7%
92 days - 182 days	58	6.6%
183 days - 365 days	123	14.0%
366 days - 547 days	142	16.2%
548 days - 730 days	141	16.1%
Greater than 730 days	380	43.3%
Total	878	100.0%