



Australian Government
Department of Immigration
and Border Protection



Australian
BORDER FORCE

Immigration Detention and Community Statistics Summary

31 May 2017

Table of Contents

Immigration Detention and Community Statistics Summary.....	1
About this report.....	3
Enquiries	3
Acronyms	3
Immigration Detention And Community Statistics Summary	4
In Community under Residence Determination Population By State/Territory.....	5
Immigration Detention Population.....	6
From 1990 to 31 May 2017	6
People In Immigration Detention Facilities.....	7
Arrival Type.....	7
People In Immigration Detention.....	8
Nationality	8
Children In Immigration Detention.....	9
Time In Immigration Detention Facilities	11
Time In Community Under Residence Determination.....	12

About this report

This report provides an overview of the number of people in immigration detention and Regional Processing Centres as at midnight on the date of the report. The report is produced on a monthly basis.

Data is sourced from several departmental processing and recording systems. Data relating to the immigration detention population is dynamic and there can be delays in transmission of information from the department's immigration detention network operations. Variations in figures between this report and previous issues can occur. Due to these issues, data from the current financial year should always be considered provisional.

Further information about immigration detention is available at:

<http://www.border.gov.au/about/immigration-detention-in-australia>

Enquiries

Comments or enquiries concerning this report should be sent using the department's client service feedback form quoting the name and date of the report.

See: <http://www.border.gov.au/about/contact/make-enquiry/enquiries-and-feedback>

Acronyms

Table 1 – Acronyms used in this document

Acronym	Description
APOD	Alternative Place of Detention
IMA	Illegal Maritime Arrival
IDC/F	Immigration Detention Centre/Facility
IRH	Immigration Residential Housing
ITA	Immigration Transit Accommodation
RPC	Regional Processing Centre
S501	Section 501 of the Migration ACT
S501 Visa Cancellation	Visa cancellations based on character or related grounds

Immigration Detention And Community Statistics Summary

At 31 May 2017, there were 1400 people in immigration detention facilities, including 1113 in immigration detention on the mainland and 287 in immigration detention on Christmas Island.

A further 542 people were living in the community after being approved for a residence determination and 22,701 were living in the community after grant of a Bridging Visa E.

The table below reflects figures based on records in Department of Immigration and Border Protection systems.

Table 2 – People in Immigration Detention Facilities (IDFs), Alternative Places of Detention (APODs), Regional Processing Centres (RPCs) and the Community at 31 May 2017

Place of immigration detention	Men	Women	Children	Total	Change from Previous Summary 30/04/17
Christmas Island IDC	287	0	0	287	+ 3
Maribyrnong IDC	98	9	0	107	+ 10
Perth IDC	17	8	0	25	- 6
Villawood IDC	437	50	0	487	- 30
Yongah Hill IDC	273	0	0	273	+ 24
Mainland APODs	20	0	0	20	- 3
Total IDCs/APODs	1,132	67	0	1,199	- 2
Adelaide ITA	11	<5	0	14	- 2
Brisbane ITA	57	11	0	68	+ 6
Melbourne ITA	104	14	<5	119	+ 6
Total in IRH and ITA	172	28	<5	201	+ 10
Total in IDC/F	1,304	95	<5	1,400	+ 8

Total in Community under Residence Determination	183	150	209	542	- 14
---	------------	------------	------------	------------	-------------

Total IMA in Community on Bridging Visa E (Including people in a re-grant process)	15,995	2,988	3,718	22,701	- 872
---	---------------	--------------	--------------	---------------	--------------

Republic of Nauru (RPC)	279	48	43	370	- 3
Manus Province, Papua New Guinea (RPC)	816	0	0	816	- 5
Total IMA in RPCs	1,095	48	43	1,186	- 8

Detention Group	Men	Women	Children	Total	Change from Previous Summary 30/04/17
S501 Visa Cancellation	439	17	0	456	+ 10
Illegal Maritime Arrival	352	15	<5	368	-9
Other	513	63	0	576	+ 7
Total	1,304	95	<5	1,400	+ 8

In Community under Residence Determination Population By State/Territory

Of the 542 people approved for a residence determination to live in the community, 36 per cent were in Victoria, 27.3 per cent in New South Wales, 22.9 per cent in Queensland, 7.6 per cent in Western Australia, 6.1 per cent in South Australia and 0.2 per cent in the Australian Capital Territory.

Table 3 – People in the Community under Residence Determination by State/Territory at 31 May 2017

State/Territory	Adult Male	Adult Female	Child Male (<18 years)	Child Female (<18 years)	Total
Victoria	69	53	40	33	195
New South Wales	43	45	35	25	148
Queensland	37	33	35	19	124
Western Australia	24	9	5	<5	41
South Australia	10	10	<5	9	33
Australian Capital Territory	0	0	<5	0	<5
Total	183	150	120	89	542

Immigration Detention Population

From 1990 to 31 May 2017

The number of people in held immigration detention facilities has decreased by 170 to 1400 compared with 1570 at the end of May 2016. This decrease takes into account releases of detainees into the community under residence determination and detainees granted Bridging E visas (BVEs) as well as decreases through return and removal activities.

Figure 1 – Population in Immigration Detention

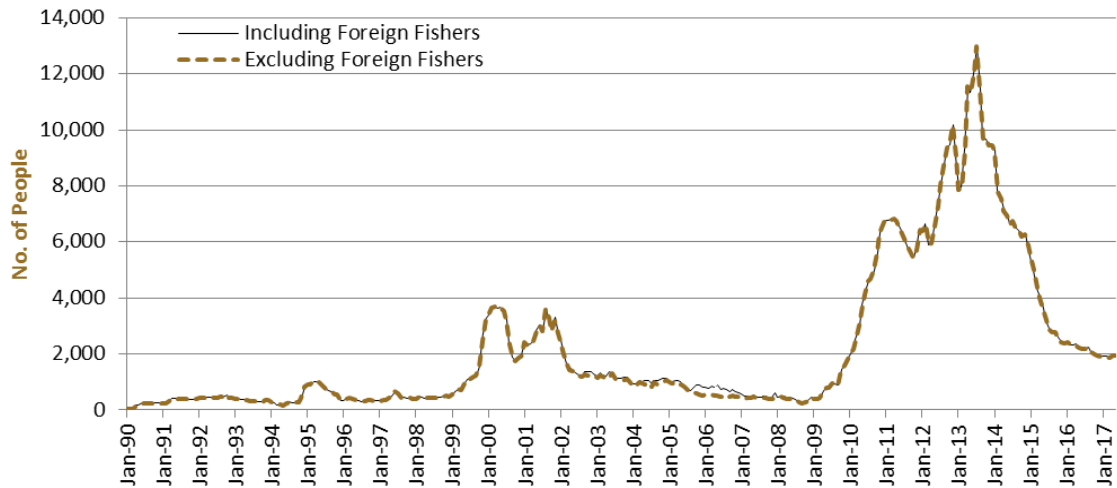


Figure 1 above, shows the number of people in immigration detention from 1990 to the date of this report. The trend had a consistent rise of people in immigration detention from January 2009 to January 2013, but has since had consistent decline.

People In Immigration Detention Facilities

Arrival Type

There were 451 people who arrived unlawfully by air or boat, in held immigration detention facilities at 31 May 2017 representing 32.2 per cent of the total immigration detention population.

There were also 949 people (67.8 per cent of the total immigration population) who arrived in Australia lawfully and were subsequently taken into immigration detention and had visa cancellations for either over staying or breaching their visa conditions.

Figure 2 – People in Held Immigration Detention Facilities by Detention Group

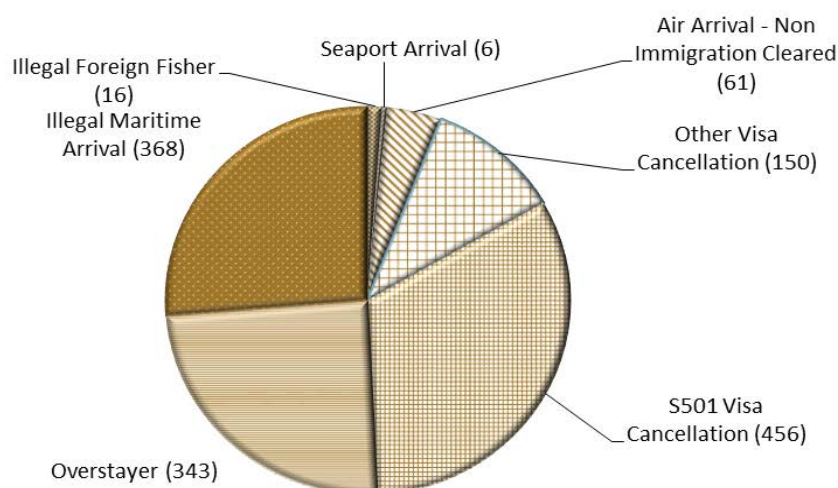


Figure 2 above, shows the number of people in held immigration detention facilities by detention group, including Overstayers, S501 and Other Visa Cancellations, Foreign Fishers, Irregular Maritime Arrivals, Unauthorised Air Arrivals, and if required – Inadequately Documented Crew Members and Others such as stowaways and ship deserters.

Table 4 – People in Held Immigration Detention Facilities by Detention Group at 31 May 2017

Place of immigration detention	S501 Visa Cancellation	IMA	Other Detention Group	Total	Change from Previous Summary 30/04/17
Christmas Island IDC	156	72	59	287	+ 3
Maribyrnong IDC	34	18	55	107	+ 10
Perth IDC	10	<5	12	25	- 6
Villawood IDC	158	93	236	487	- 30
Yongah Hill IDC	74	103	96	273	+ 24
Mainland APODs	<5	0	19	20	- 3
Total IDCs/APODs	433	289	477	1,199	- 2
Adelaide ITA	<5	6	7	14	- 2
Brisbane ITA	22	26	20	68	+ 6
Melbourne ITA	0	47	72	119	+ 6
Total in IRH and ITA	23	79	99	201	+ 10
Total in IDC/F	456	368	576	1,400	+ 8

People In Immigration Detention

Nationality

At 31 May 2017, there were 1400 people in held immigration detention facilities. Of these 1400 people, 12.6 per cent were from New Zealand, 8.8 per cent were from Malaysia, 8.1 per cent were from Vietnam, 7.1 per cent were from Iran and 6.5 per cent were from Sri Lanka.

Table 5 – People in Held Immigration Detention Facilities by Nationality at 31 May 2017

Nationalities	Adult Male	Adult Female	Child Male (<18 years)	Child Female (<18 years)	Total
New Zealand	164	12	0	0	176
Malaysia	107	16	0	0	123
Vietnam	104	8	<5	0	113
Iran	89	11	0	0	100
Sri Lanka	91	0	0	0	91
China	56	12	0	0	68
India	63	<5	0	0	65
United Kingdom	47	<5	0	0	48
Iraq	46	0	0	0	46
Other	537	33	0	0	570
Total	1,304	95	<5	0	1,400

At 31 May 2017, 542 were people living in the community after being approved for a residence determination. Of these 542 people, 49.8 per cent were from Iran, 11.4 per cent were from Sri Lanka, 10 per cent were Stateless and 5.4 per cent were from Vietnam and 5.2 per cent were from Iraq.

Table 6 – People in the Community under Residence Determination by Nationality at 31 May 2017

Nationalities	Adult Male	Adult Female	Child Male (<18 years)	Child Female (<18 years)	Total
Iran	98	83	49	40	270
Sri Lanka	16	14	22	10	62
Stateless	16	13	12	13	54
Vietnam	10	7	7	5	29
Iraq	9	6	6	7	28
Other	34	27	24	14	99
Total	183	150	120	89	542

Children In Immigration Detention

At 31 May 2017 there were less than five children (aged less than 18 years) in Immigration Residential Housing, Immigration Transit Accommodation and Alternative Places of Detention.

Figure 3 – Children in Immigration Residential Housing, Immigration Transit Accommodation and Alternative Places of Detention

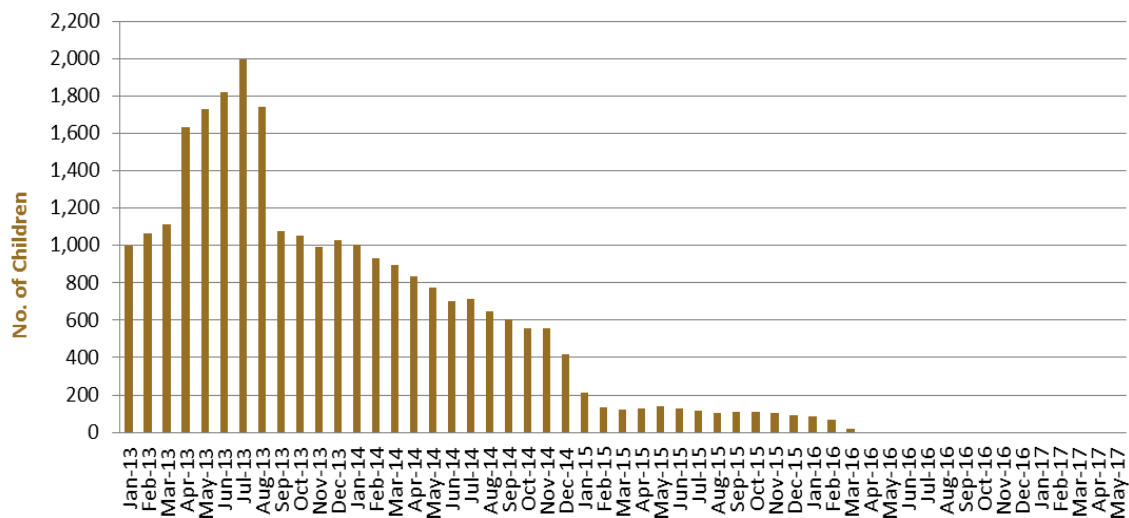


Figure 3 above, shows the number of children in immigration detention facilities and alternative places of detention from January 2013 to the date of this report. The continuous increase in the number of children in detention facilities from April 2013 to August 2013 was due to a rapid increase in irregular maritime arrivals during this period. The number of children in immigration detention facilities reduced in September 2013, as children completed mandatory processing and were transferred into the community. The number of children in detention facilities continued to decline during the late 2013 and 2014, with further reduction in January 2015.

At 31 May 2017, the number of children living in the community after being approved for a residence determination decreased by seven to 209 from 216 in the previous report.

Figure 4 – Children in the Community under Residence Determination

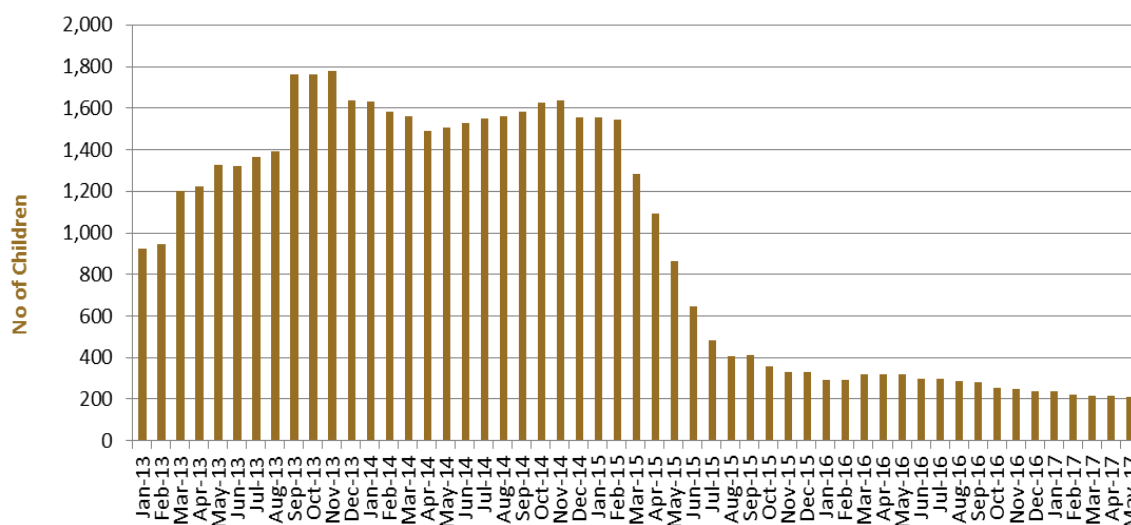


Figure 4 above, shows the number of children in the community under residence determination from January 2012 to the date of this report. The number of children in the community under residence determination, has levelled off at its lowest number since the peak in November 2013, as a result of releases into the community on Bridging E visas.

Table 7 – Children in Immigration Detention and IMA Children in the Community on a Bridging E Visa at 31 May 2017

Placement Type	Children
Immigration Residential Housing	0
Immigration Transit Accommodation	<5
Alternative Places of Detention	0
Total Children in Immigration Detention Facilities	<5
Total Children in the Community under a Residence Determination	209
Total IMA Children in the Community on a Bridging E visa (including in re-grant process)	3,718

Time In Immigration Detention Facilities

At 31 May 2017, there were 1400 people in immigration detention facilities. Of these 1400 people, 38.6 per cent had been detained for 91 days or less and 62.1 per cent had been detained for 365 days or less.

Table 8 – Length of Time of People in Held Immigration Detention Facilities at 31 May 2017

Period Detained	Total	% of Total
7 days or less	94	6.7%
8 days - 31 days	218	15.6%
32 days - 91 days	228	16.3%
92 days - 182 days	157	11.2%
183 days - 365 days	172	12.3%
366 days - 547 days	114	8.1%
548 days - 730 days	98	7.0%
Greater than 730 days	319	22.8%
Total	1,400	100%

At 31 May 2017, the average period of time for people held in detention facilities was 443 days.

Figure 5 – Average Number of Days of People in Held Immigration Detention Facilities only

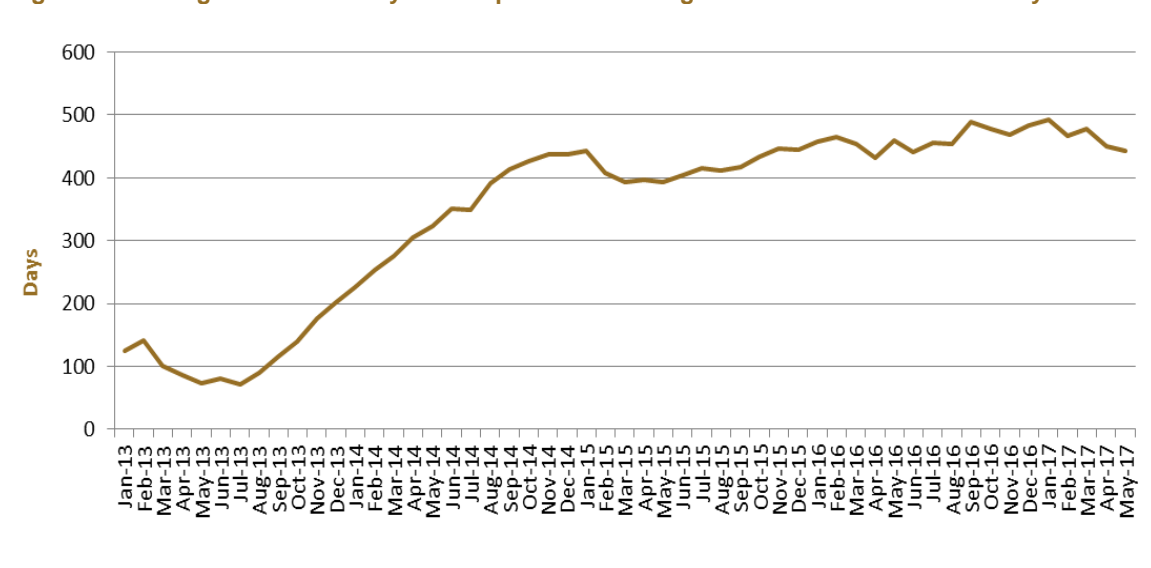


Figure 5 above, shows the average days in held immigration detention only by month from January 2013 to the date of this report. The average period of time for people held in detention facilities steadily increased from July 2013 to January 2015.

Time In Community Under Residence Determination

Of the 542 people in the community under residence determination, as at 31 May 2017, 5.9 per cent had been in the community for 91 days or less and 18.8 per cent had been in the community for 365 days or less.

Table 9 – Length of Time of People in Community under Residence Determination at 31 May 2017

Period Detained	Total	% of Total
7 days or less	<5	0.4%
8 days - 31 days	7	1.3%
32 days - 91 days	23	4.2%
92 days - 182 days	40	7.4%
183 days - 365 days	30	5.5%
366 days - 547 days	252	46.5%
548 days - 730 days	41	7.6%
Greater than 730 days	147	27.1%
Total	542	100%